

Safer Neighbourhood Board AGM

10/03/18

Sgt Paul Hamilton

PROBLEM PROFILE

- K+C is currently one of the lowest contributors to knife crime in the MPS, 246 offences as of 25/01/2018 which does represent a 37.6% increase from the previous R12 which saw 186 offences in total for total knife crime offences within the borough. This is however on trend with the rest of the MPS which has seen an average 33% across all boroughs over the R12.
- K+C are at the mid-lower end of the MPS table for total victims of knife crime for January 2018, with 43 reported offences when compared across all TP Boroughs where offence totals for knife crime range from 79 (Kingston) to 859 (Southwark).
- A large proportion of the total knife crime offences in K+C take place during Notting Hill Carnival, 35 in August 2016, which equates to 16% of the total knife crime for K+C occurring over this weekend. There has only been 1 gangs flagged stabbings in 2017 for K+C (o/s of NHC which saw 1) which saw 9 people arrested and 4 charged following gangs unit warrants.
- NHC 2017 saw 7 stabbings, down from 17 in 2016. No persons from the borough area were suspects/victims. Only one gang member was identified which was an LX gangs subject.
- K+C has a charge rate of 93% for those arrested for knife possession offences which ranks the borough as 4th in the MPS behind LX, FH

K&C Knife Crime 01/04/2017-11/02/2018

Offence	Total
Off Weapon	36
Rob pers	32
GBH W/I	29
Bladed Art	22
GBH/Wound	21
Crime Related Incident	15
Common Assault	14
ABH	10
Pub Order S 4	6
Rob Com	5
Threat W/Blade	5
Affray	4
Ass Pol	3
Pub Order S 4a	3
Racial Agg F/V	3
ThreatOfWeap	3
<i>Other offence</i>	35
Total	246

BS Gangs & BTT Objectives

- The main responsibilities of the unit are; inspirationally and dependant on resources.
 1. Reactive investigations - (Gang/HKC/PFO) are named (as suspects or victims) or arrested, for ANY OFFENCE
 2. Intelligence - Receive, assess and seek to proactively action all intelligence related to gangs, HKCs and PFOs, including Threats To Life. Identify high knife crime area's and immediately task Gangs Taskforce to seek and disrupt.
 3. Forensic dockets - Handle all dockets related to all the nominal's.
 4. Fugitive Enquiries - Seek to locate and arrest all wanted nominal's on all three matrixes AND others related to CID remit serious crime (EG: Knife point robbery) and ANY suspect who is wanted for any type of knife crime (inc simple possession)
 5. Partnership - Represent the borough in all multi-agency programmes, meetings and partnership Serious Youth Violence Forum/Quad Borough Intelligence meetings (FH, CW, QK) related to all matrix nominal's to information share, stage interventions, disrupt criminality and generate additional enforcement or diversion opportunities. Bidding for additional resources and funding to enhance the borough's gang fighting capabilities.
 6. Offender management - Ownership of all nominal's on all three matrixes, having direct administrative control of matrixes for gangs and HKCs and inputting to PFO matrix. Working with Probation & Youth Offending Service to set and monitor prison release licence conditions.

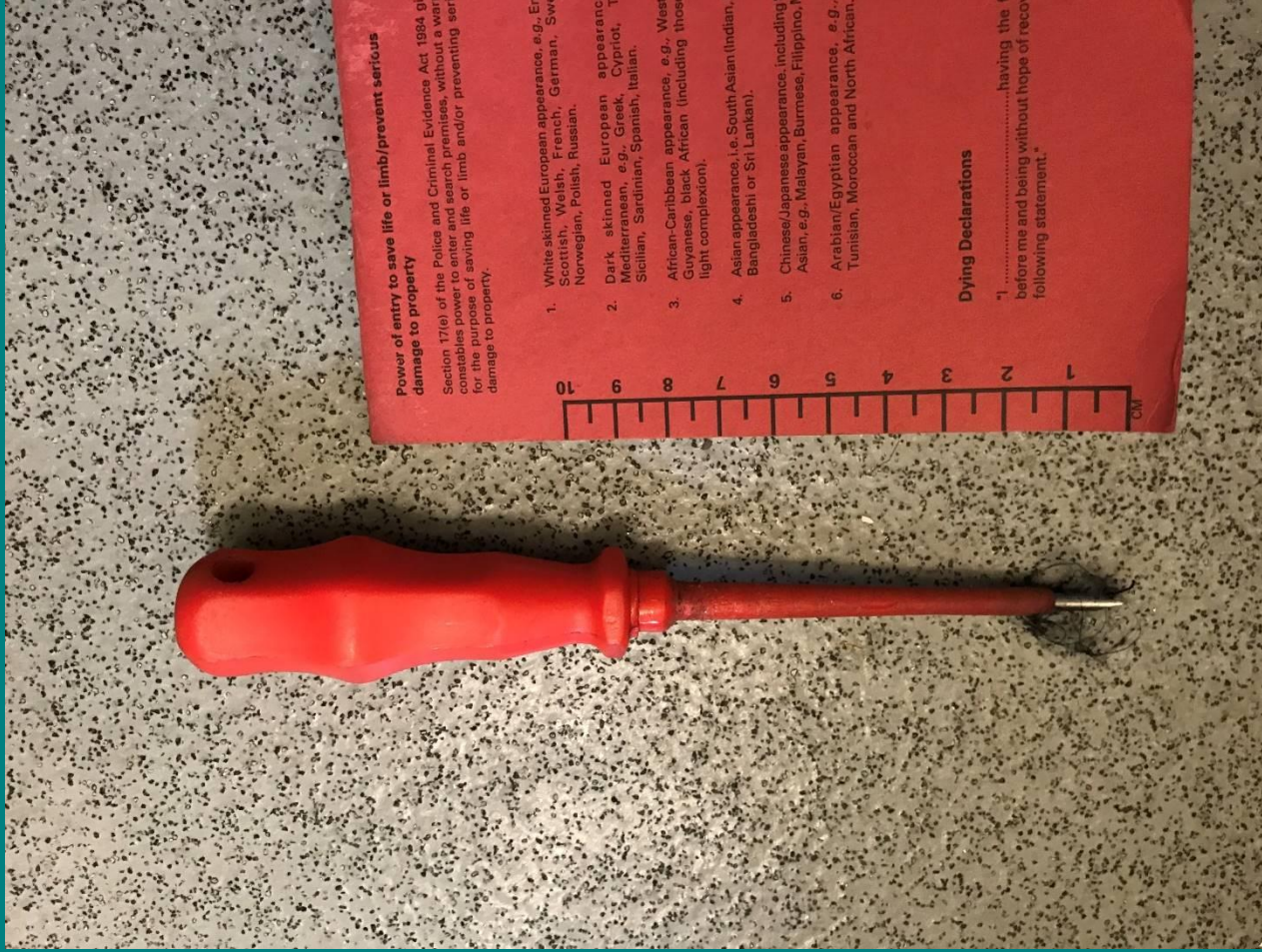
Seized Knives



Seized Knives



Seized Knives



Going Forward – Op Sceptre

- K+C have the 2nd highest numbers of Stop and Searches in the MPS for weapons. Even if one were to remove the NHC effect which occurs every August which equates to 688 of the 1364 searches, K+C would still feature in the top 12 in the MPS table for weapons S+S overall. K+C are generally performing better than other comparable boroughs on this, which may be explained by our use of TSG, Dogs, Trident asset successfully secured for over the last year.
- The following resources are now being tasked to Op Sceptre as business as usual: Gangs Unit and Taskforce, Council Policing Team, The following activities will be driven forward as business as usual: hotspot patrols, weapons sweeps, schools engagement/education, Q Cars, robust targeting of HKC and Gangs subjects, Gangs/HKC visits, warrants, EWMS enquiries for Gangs/PFO/HKC's
- K+C has a charge rate of 93% for those arrested for knife possession offences which ranks the borough as 4th in the MPS

Stop and Search

**Number of complaints received arising from a Stop and Search Incident
in last 12 months**

How many? 21 and 0 were upheld.

K&C sit 5th in the Met with positive S&S.

For Jan 2018 – total K&C stop and searches 481 – Outcome rate 33.5 % one in three of all searches, result in the officer's suspicion being confirmed and an illegal object found or a relevant crime detected, with an arrest rate of 16.2 %.

Our performance against comparable OCU's is excellent, FH completed 336 searches, QK 388 searches.

Ongoing Operations

- Op Chantillion – local operation to tackle smash and grabs and moped enabled crime, this has prevented offences in the W10/W11 area. There is a proactive and reactive plan in place.
- Tactics used include forensic tagging spray. Once used it can be later found on skin and clothing, it remains until shown up under UV lights in custody. Every canister is unique and can only be used once. This means the rider can be linked back to the exact incident when they were tagged.
- Q cars are regularly out assisting the uniform ERPT team, identifying escape routes used previously and utilising various methods that are available.

Community Weapons 'Flash' Sweeps

Flash Searches: A brief overview

- Flash Searches are intended to be a clear sign that local communities and police are coming together, searching their open spaces such as parks and play areas, to take knives off of the streets.
- A 'Flash Search' is the term used for community based weapons sweeps. It seeks to evolve the current weapons sweeps tactics the MPS already have in place while placing a new focus on community engagement.
- Tower Hamlets borough have been piloting this initiative and have completed four searches since early July 2017 with local faith leaders from the Christian, Muslim and Jewish faith groups. Faith leaders have been very supportive of this initiative and are found to be a good way of reaching out to communities in the first instance.
- The results of these searches have garnered significant/positive media interest. On all searches, at least one sizable knife has been found concealed in the open spaces searched. The Flash Searches have recovered large Machetes, Zombie style knives and kitchen knives. Other 'intended weapons' have been found such as hammers, baseball bats and iron bars. These are identified as intended weapons due to the clear manner in which they are concealed and easily accessible by those who want to access them quickly.
- The Flash Searches are very visible and engagement/results can be published on local borough social media feeds e.g. Twitter, Facebook.