

Developments in Children's Centres Early Help and services to young people in RBKC

Our integrated early help provision for families with children 0-19 (up to 25 with SEND).



Presentation covers

- Family hubs
- Detached and Outreach Team
- Targeted Prevention Team
- Participation team
- Families Forward
- Wider developments in youth work including new youth hubs



LOCALITY FAMILY HUB MODEL

Our children's centre and early help family support teams are now integrated into 2 Family Hubs, **North and South**.

In RBKC our family hubs will:

- provide and/or co-ordinate access to universal and targeted family support within a range of welcoming and accessible settings.
- support families to be resilient, self-reliant and independent whilst having the help when they need it in a timely and appropriate way.
- lay the foundation for future integration across the community and voluntary sector as well as collaborating with our partner agencies

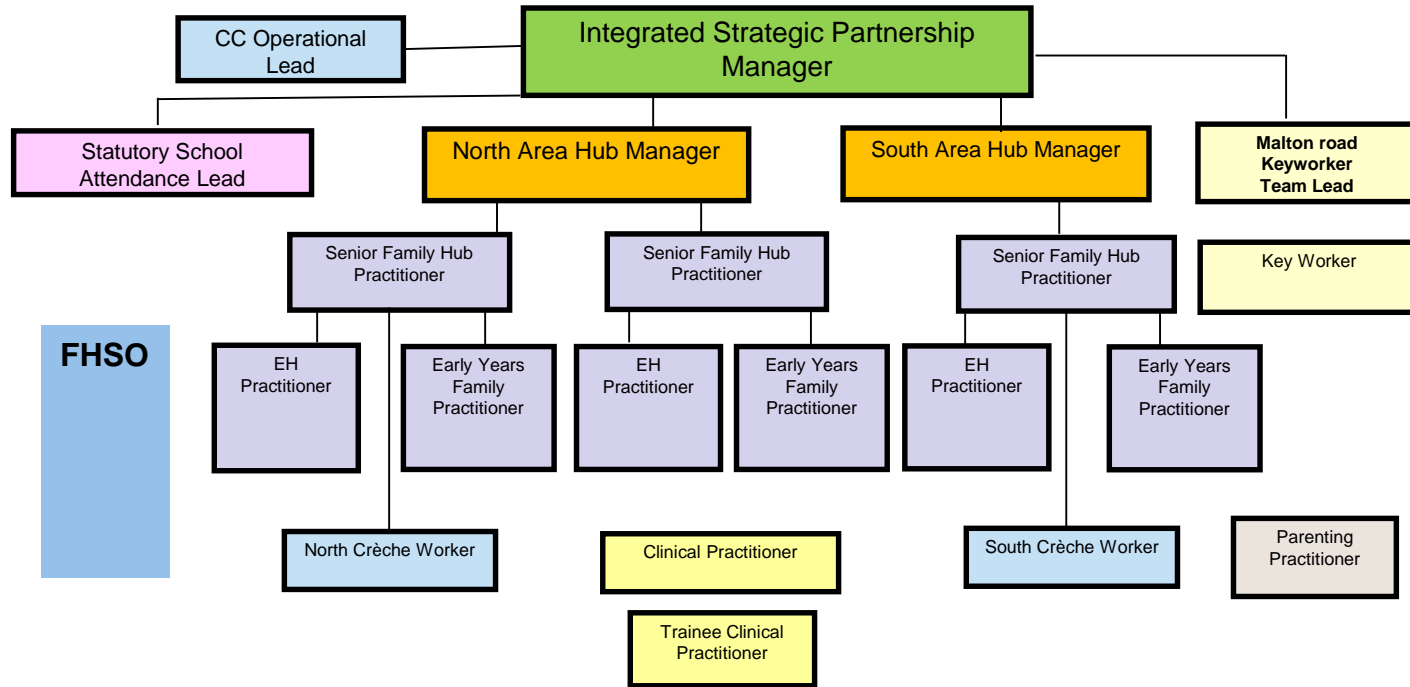


What is a Family Hub?

- The Family Hub model is not simply an effort to locate as many different services in a single building as possible, but rather **a means to better coordinate different types of support and deliver these in the most effective way for families**
- **Effective outreach is also key** to ensure that support is not restricted for those who cannot easily access a single site. This represents an important consideration in ensuring that Family Hubs can effectively serve their whole community, and a strong outreach service is essential.
- Within a Family Hub model, **supporting the health and development of young children aged 0-5 remains a vital part of the work that Hubs do**, reflecting the enormous importance of the early years to later life outcomes. Children's centres therefore continue to play a crucial role in RBKC.



Our Integrated 0-19 Service Structure



MODEL OF SUPPORT

The Early Help Model of Support

> Looks at the whole family

> Builds on the strengths of a family

> Works in a systemic way looking at relationships



> Follows a team around the family (TAF) approach so that support is coordinated across a number of agencies

> Includes the voice of the child and engages them in the process



Our aims and objectives :

- Collaborative and effective delivery across the partnership – the right service at the right time.
- Early identification of additional SEN needs.
- Increase GLD (good level of development) and school readiness.
- Build resilience, self reliance and sustained change with families.
- Identify indicators of harm early and provide targeted support: reducing number of children requiring statutory services.
- Encourage Healthy Lifestyles
- Improve life chances through improved attendance and attainment at school and supporting inclusion.
- Prevention of NEET.
- Prevention of young people engaging / being victims of SYV and offending.
- Early support to families from the wider community impacted by the Grenfell disaster and support the Dedicated Service for Bereaved and Survivors.



Early Help Parenting Offer

We recognise that parents are pivotal in the positive outcomes of their children and so we work to support each parent with their individual needs; using the Family Star Assessment Tool.

Early Help Practitioners are trained in at least one Evidence-Based Programme which they will use in a range of ways within their role either in group settings or as part of their direct work.

All of our programmes and workshops are strength-based and work to build on the parent/child relationship, positive communication, self-esteem and self care among other areas including behaviour-management-strategies and resilience-building.

Some of our programmes are available in additional languages or can be tailored for parents with Learning Disabilities. We also work with the Children with Disabilities Team to deliver Programmes for Parents whom have children with Additional or Behavioural Needs.



Early Help Front Door Process

Early Help Single Front Door

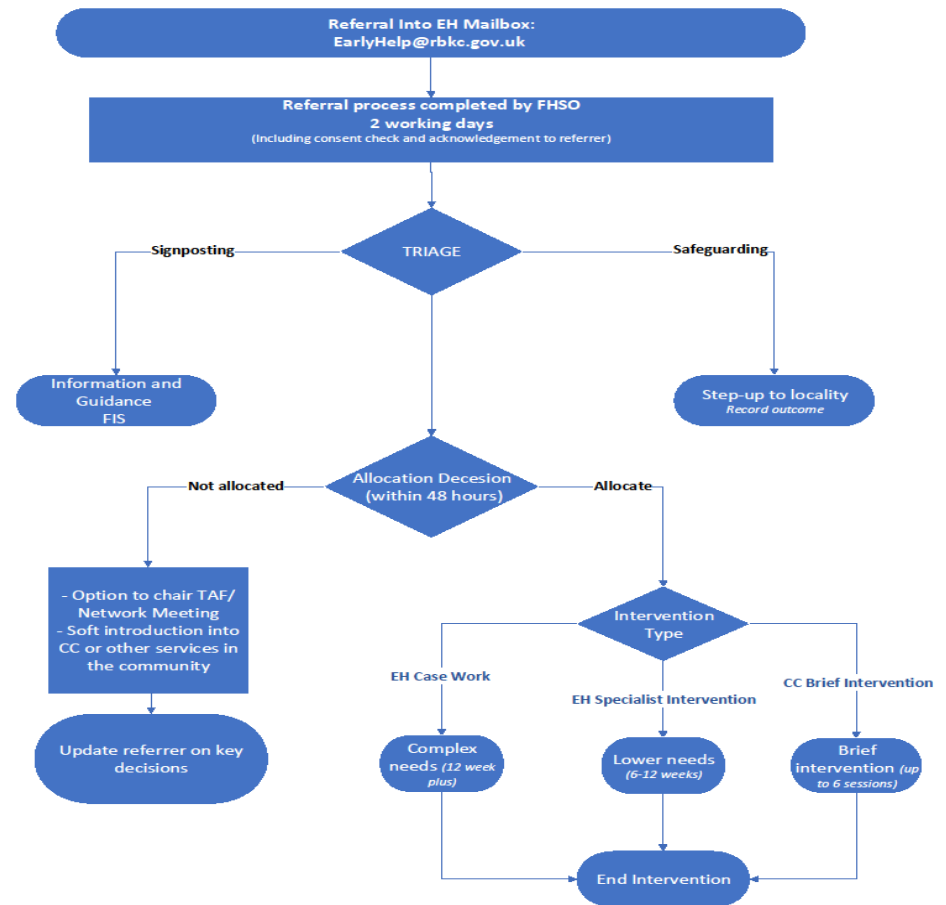
Why?

- To bring the right support to families at the right time.
- To support families who need help to access the best local and culturally appropriate service, to experience the least intrusive and stigmatizing service, to access community strengths, knowledge and relationships to create more sustained networks of support and build community cohesion.
- To reduce demand for statutory services, to release capacity in early help family support team for more complex work.

Referrals to the Early Help Service should be emailed to:

earlyhelp@rbkc.gov.uk

To speak to a member of the Early Help Team, please contact: 020 7598 4601



Families Forward – edge of care and intensive family support offer in RBKC



Families Forward Overview

- Works across RBKC with families who are currently and will remain open to social work locality team.
- We only accept referrals from social workers
- We are a multidisciplinary team including parenting, substance misuse, child sexual exploitation and family therapy
- We work with families predominately with children age 5-18 yrs but also work with some families of children under 5 years old
- Our main aim is to prevent family breakdown and children/young people entering the care system.
- We don't have a set amount of time for an intervention but on average work with families 12-18 months, sometimes less, sometimes longer.
- We look at family relationships, looking at patterns of stuck behaviour and unpicking the barriers to change; trying to understand the cause of the difficulties families are experiencing as well as offering practical support ie parenting – routines, boundaries, managing challenging behaviour
- We work alongside the family and spend time building meaningful relationships to support and enable them to make positive changes to reduce the risks to the children.



Sub-teams of Families Forward

- The **Family Activity Programme** is based on systemic family principles and offers families an opportunity to take part in activities together. This gives families new experiences together, new memories and an opportunity to re-author who they are as a family. It focuses on improving family relationships through the medium of the activity. Activities include: climbing, kayaking, art, photography, family gym, camping residentials, Jamie's Farm residential.
- The Family Activity programme is for families working with Families Forward and if there are spare spaces this is offered to social work teams and Early Help to refer families they feel would benefit.
- **Action For Change** is an adult only service across RBKC, Hammersmith & Fulham and Westminster, working with parents whose children have been permanently removed from their care through the courts. It offers both practical and emotional support following the loss of their child and helping parents to have healthier lifestyles to prevent repeat removals should the parent(s) become pregnant again.



New service offers for young people

New Prevention Services within the Council:

- A new team has been established to deliver targeted youth support specifically for **NEETS** that diverts young people into positive activities and suitable EET.
- Development of the **new Detached and Outreach service** to prevent serious youth violence and offending.
- A new **youth participation team** in the Borough giving young people a voice and ensuring that they are able to have a say in decisions that affect them, including a **new RBKC Youth Parliament**.



Key contacts

Head of Service - Natasha Bishopp

Natasha.Bishopp@rbkc.gov.uk

Integrated Strategic Partnership Manager (for Early Help and Children's Centre's) – Serita Kwofie

Serita.Kwofie@rbkc.gov.uk

North Area Hub Manager – Judith Passley

Judith.Passley@rbkc.gov.uk

South Area Hub Manager – Andrea Jones

Andrea.Jones@rbkc.gov.uk

Malton Road Team(Grenfell wider community support) – Helen Dunlea

Helen.Dunlea@rbkc.gov.uk

Statutory School Attendance Lead – Sherifa Prince

Sherifa.Prince@rbkc.gov.uk



Key contacts continued

Parenting Practitioner – Donna Archer

Donna.Archer@rbkc.gov.uk

Youth Offending Team – Elaine Weldon

Elaine.Weldon@rbkc.gov.uk

Manager for Detached and Outreach Team (DOT) and Targeted Prevention Team (TPT) –
Jacquie Scarparo

Jacqueline.Scarparo@rbkc.gov.uk

Families Forward Team Manager – Letitia Bradley

Letitia.Bradley@rbkc.gov.uk

Families Forward Deputy Manager – Madeleine Quin

Madeleine.Quin@rbkc.gov.uk



End of presentation

Q & A

