



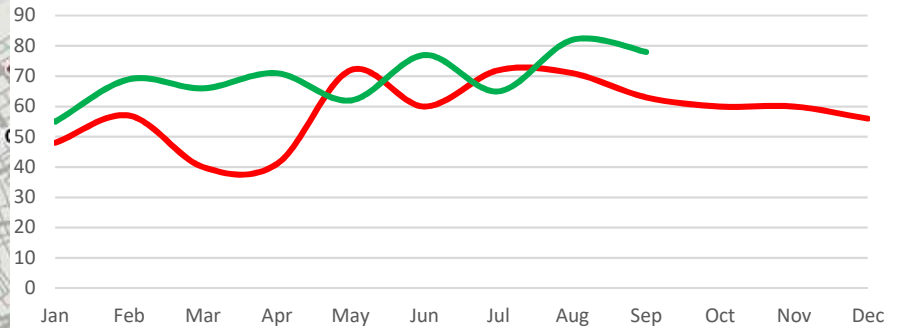
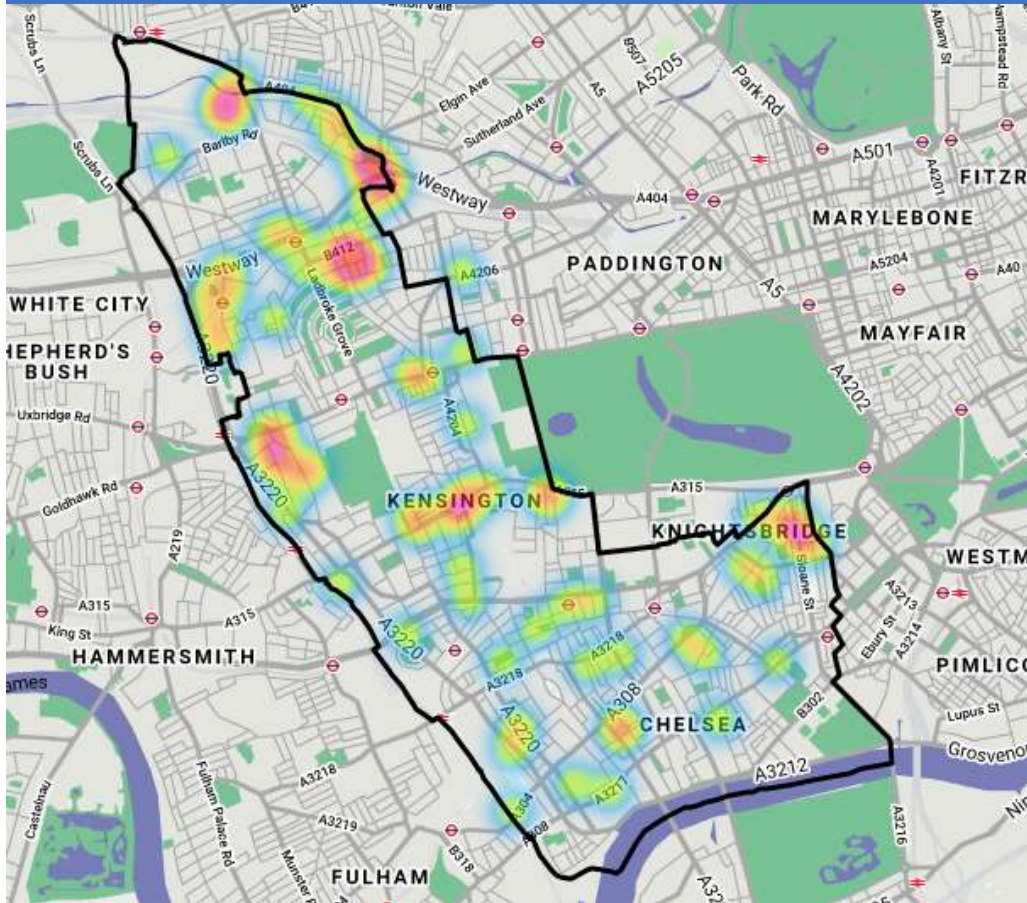
Protective marking	RESTRICTED to SNB members, circulation electronically
FOIA Exemption	Yes
Suitable for publication scheme?	No
Title	Kensington & Chelsea Crime Analysis
Summary	Assessment of crime on RBKC – September 2019 crimes
Purpose	Analysis of crime
Authors	AW Business Support (HQ)
Owner	Chief Inspector Simon Brooker p195231
Date created	18/10/2019
Review date	N/A

Introduction

- Graph shows year on year data - **Red line is 2018** & **Green line is 2019**
- Bottom right - top wards on volume
- Bottom left – peak times and days for offences in the month
- Number of offences in text box relates to the current month and previous reporting period relates to the previous month



Robbery

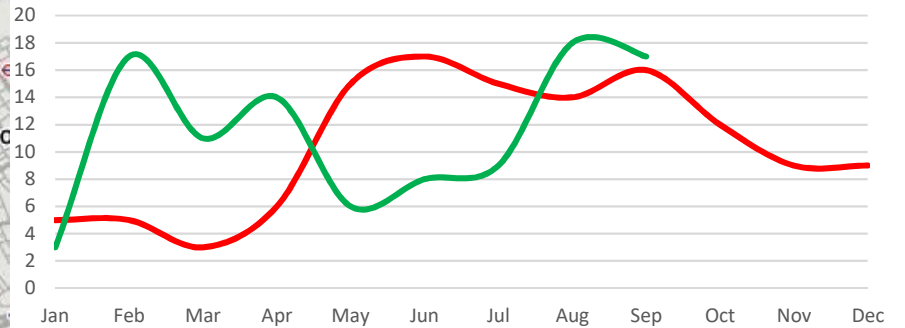
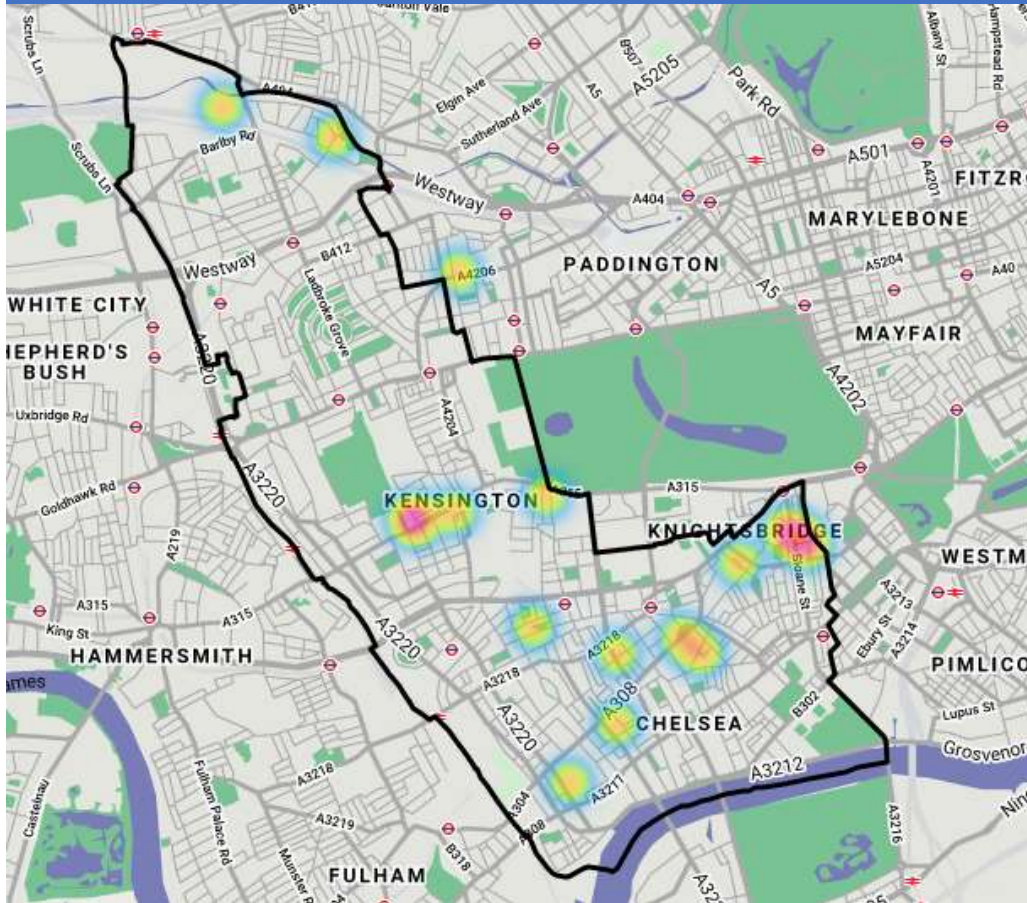


78 offences which is a decrease of 4 crimes compared to previous reporting period (82). Year on year shows an increase of 15 crimes (63). Last year trend shows a decrease in the next reporting period.

Offence	Count
Personal Property	75
Business Property	3

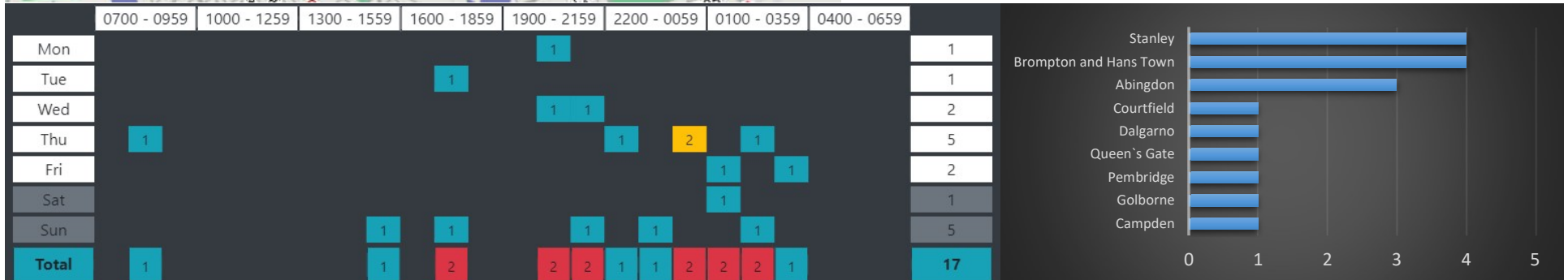


Watch Robbery



17 offences which is a decrease of 1 crimes compared to previous reporting period (18). Year on year shows an increase of 1 crimes (16). Last year trend shows a decrease in the next reporting period.

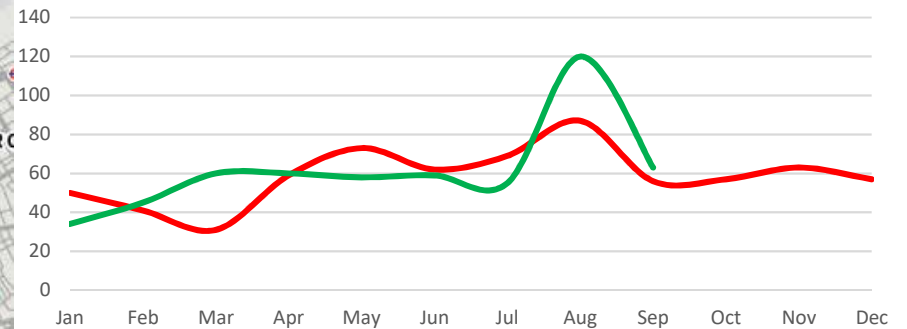
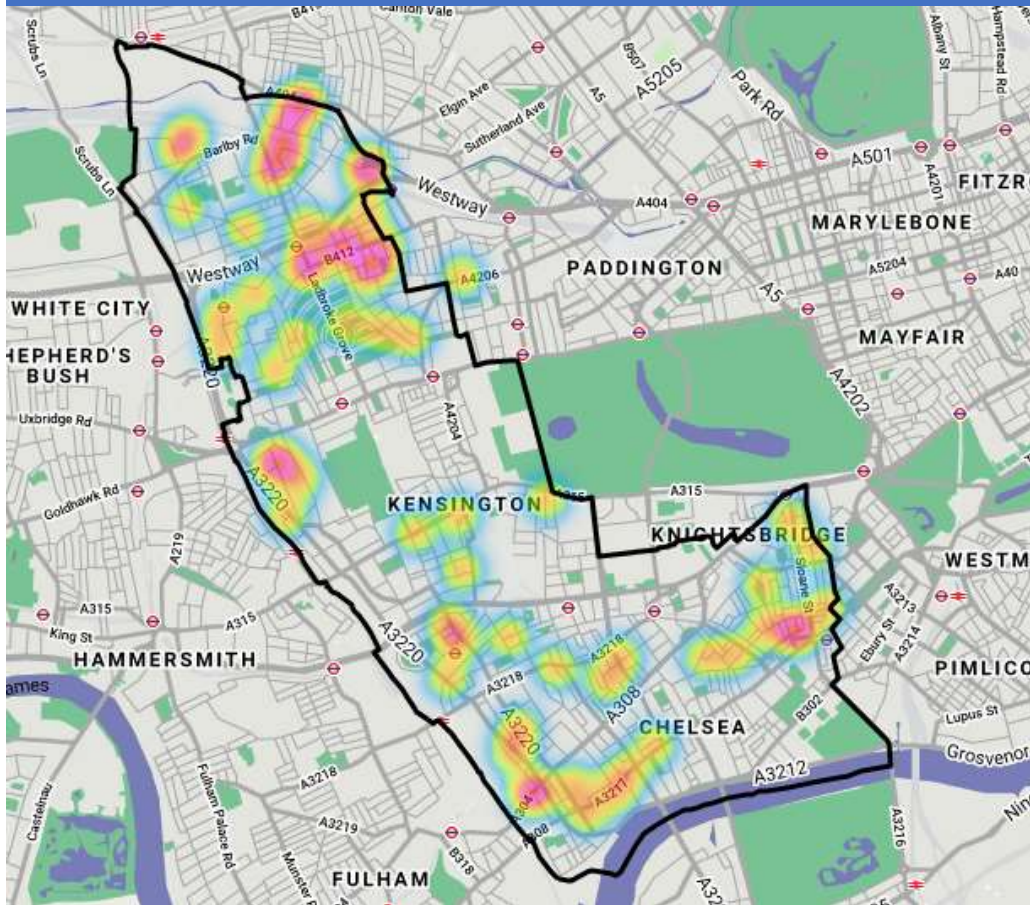
Offence	Count
Personal Property	17



**METROPOLITAN
POLICE**

OFFICIAL

Knife Crime



63 offences which is a decrease of 57 crimes compared to previous reporting period (120). Year on year shows an increase of 7 crimes (56). Last year trend shows an increase in the next reporting period.

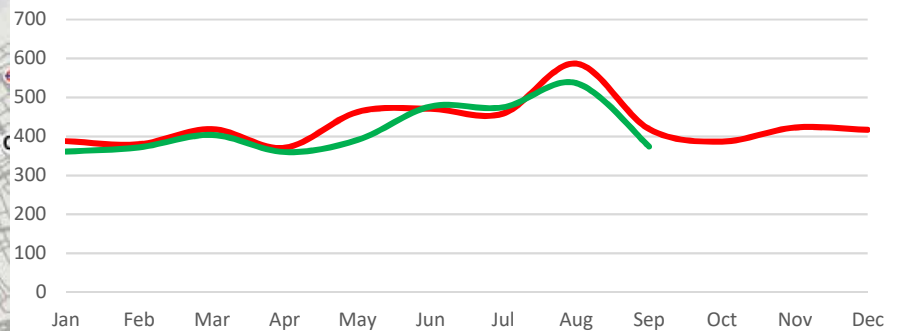
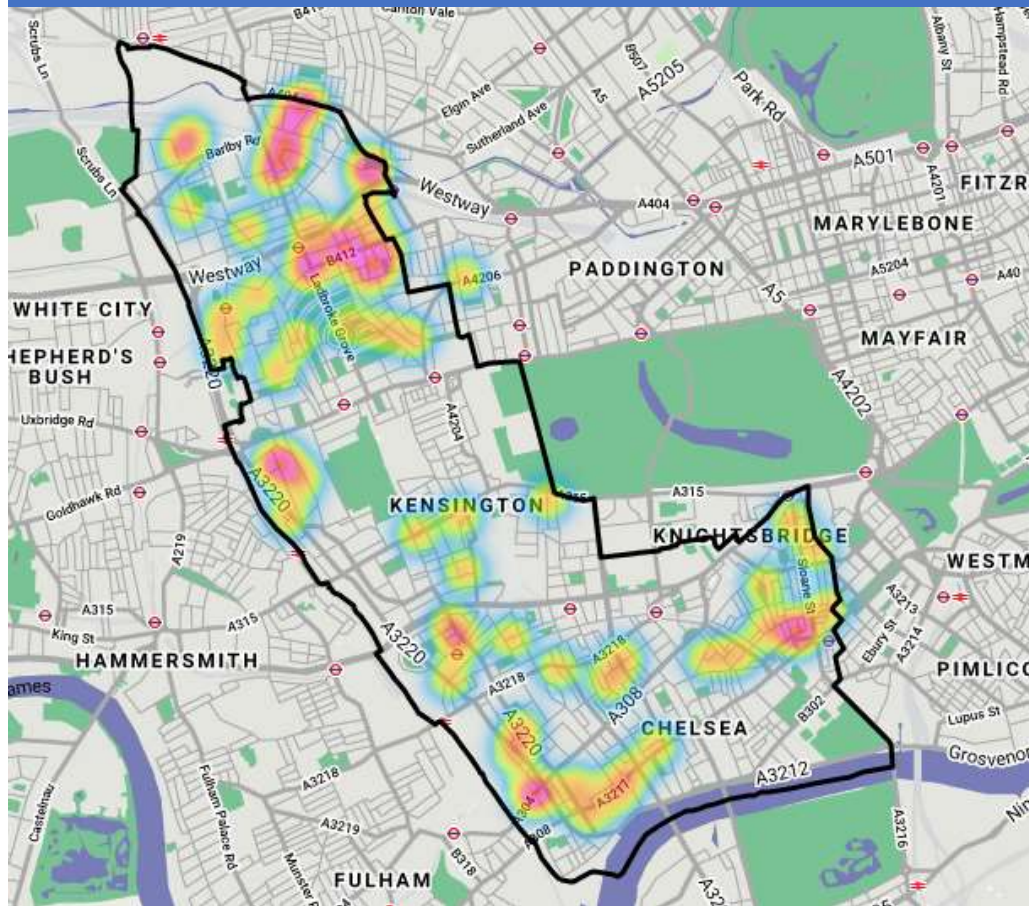
Offence	Count
Robbery	21
GBH	10
Offensive Weapon	8
ABH/Common Assault	8
Harassment	7
Other	13



METROPOLITAN
POLICE

OFFICIAL

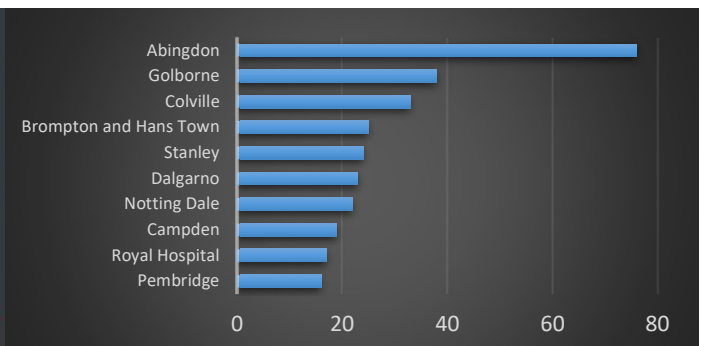
Violence Against the Person



374 offences which is a decrease of 163 crimes compared to previous reporting period (537). Year on year shows a decrease of 45 crimes (419). Last year trend shows a decrease in the next reporting period.

Offence	Count
Common Assault	116
Harassment	113
ABH	103
GBH	26
Other (Inc – Off Weap)	27

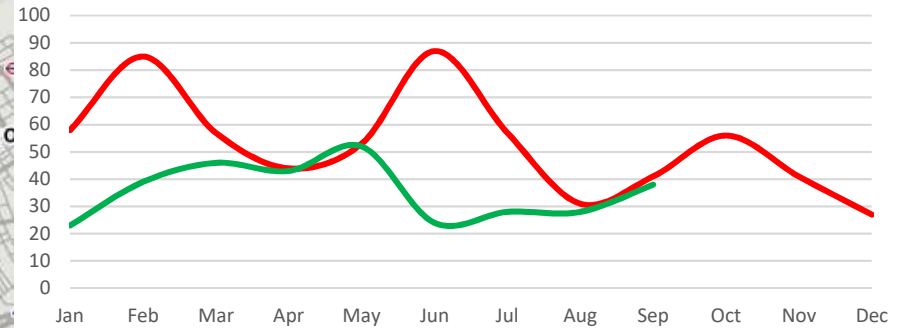
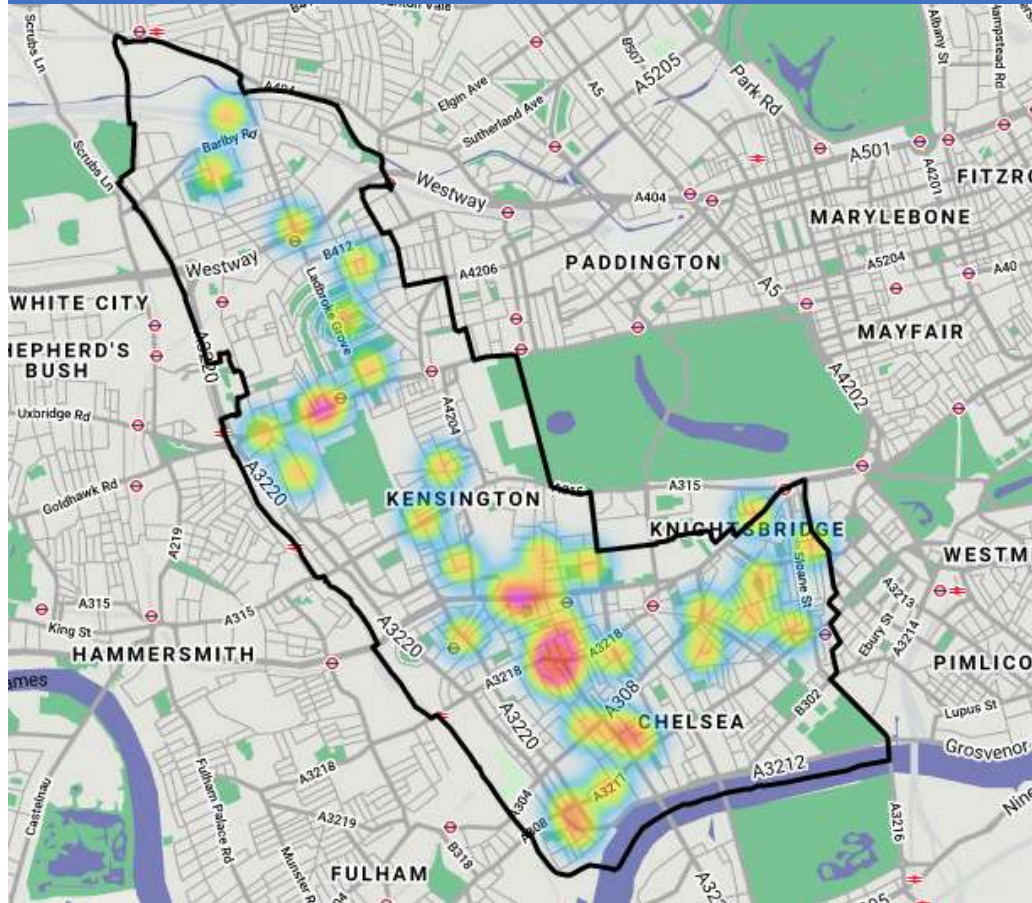
	0700 - 0959			1000 - 1259			1300 - 1559			1600 - 1859			1900 - 2159			2200 - 0059			0100 - 0359			0400 - 0659			
Mon	3	3	2		5	2	6	7	2	3	4	2	2	3	3	1	5	1						54	
Tue	2	5	1	1	4	2	4	2	4	4	2		3	3	1	1	6	1	1	1	1	1	50		
Wed	1	3	3	3	1		5	2	4	7	4	5	1	4	1	2	2	4	1	1		1	55		
Thu	1	4	1	1	2	4	1	1	2	3	5		4	2	3	1	1	3	3			2	44		
Fri	6	6	1	7	2			4	5	4	4	4	6	3	2	5	2	5	1	2			69		
Sat	1		1		2	4	2	4	1	2	3	3	2		3		3	6	3	2	1	1	3	47	
Sun	1	1	1	2	2	3	3		6	1	2	4	3	5	4	3	1	12					1	55	
Total	10	19	15	16	10	20	15	21	27	23	25	22	18	19	19	15	11	41	10	6	2	3	1	6	374



METROPOLITAN
POLICE

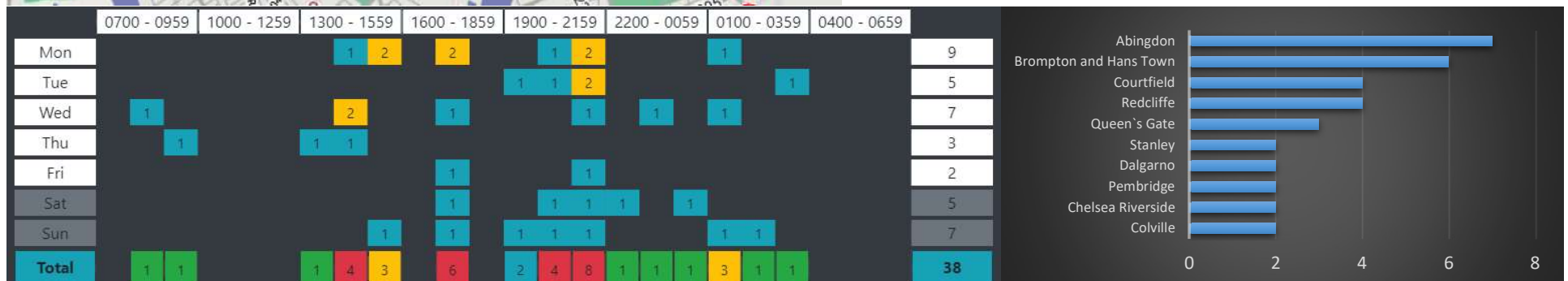
OFFICIAL

Moped Crime



38 offences which is an increase of 10 crimes compared to previous reporting period (28). Year on year shows a decrease of 3 crimes (41). Last year trend shows an increase in the next reporting period.

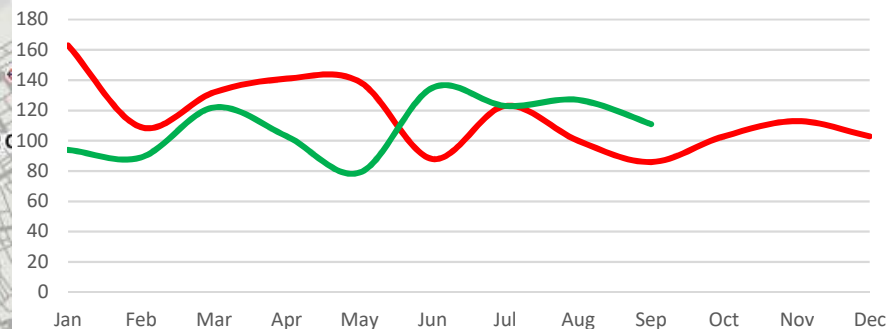
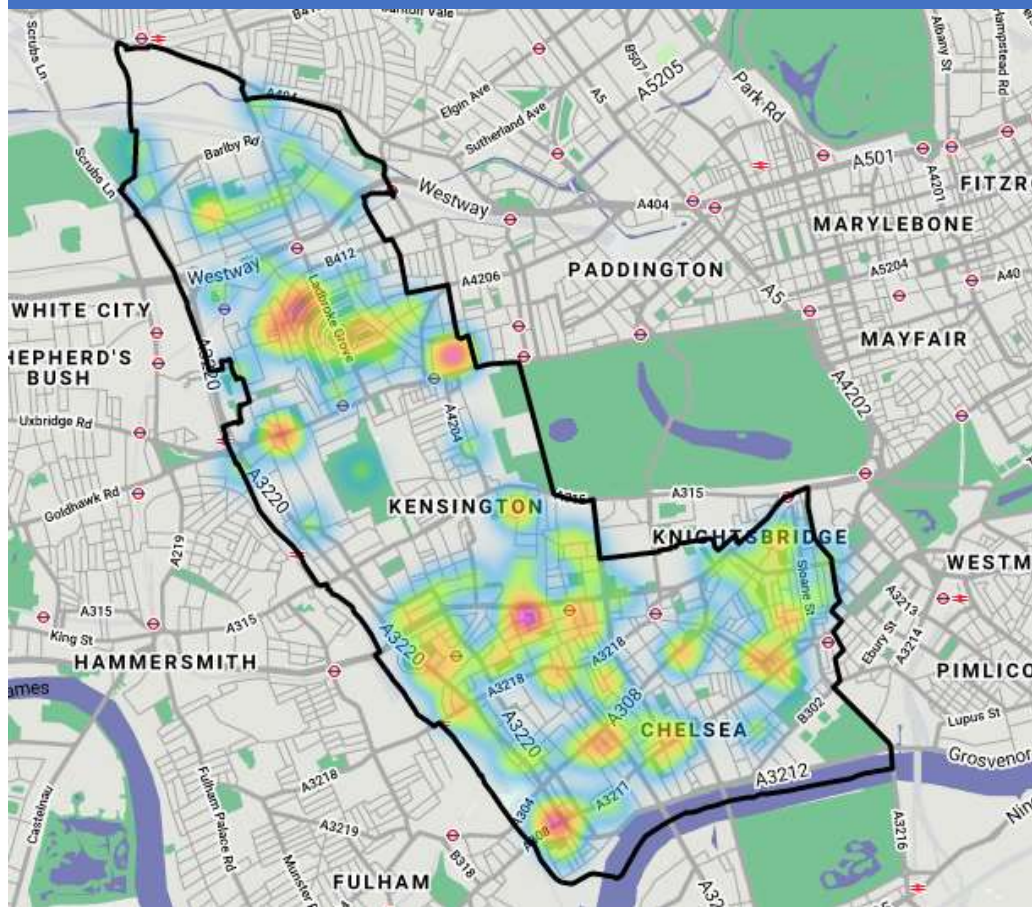
Offence	Count
Robbery	10
Theft from M/V	10
ABH	2
Criminal Damage	2
Harassment	2



METROPOLITAN
POLICE

OFFICIAL

Residential Burglary



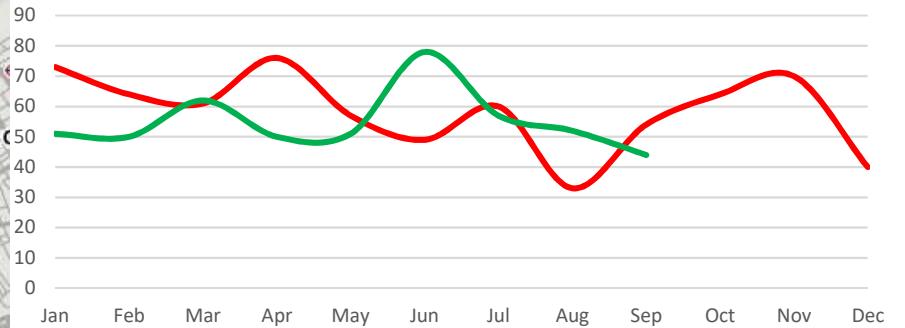
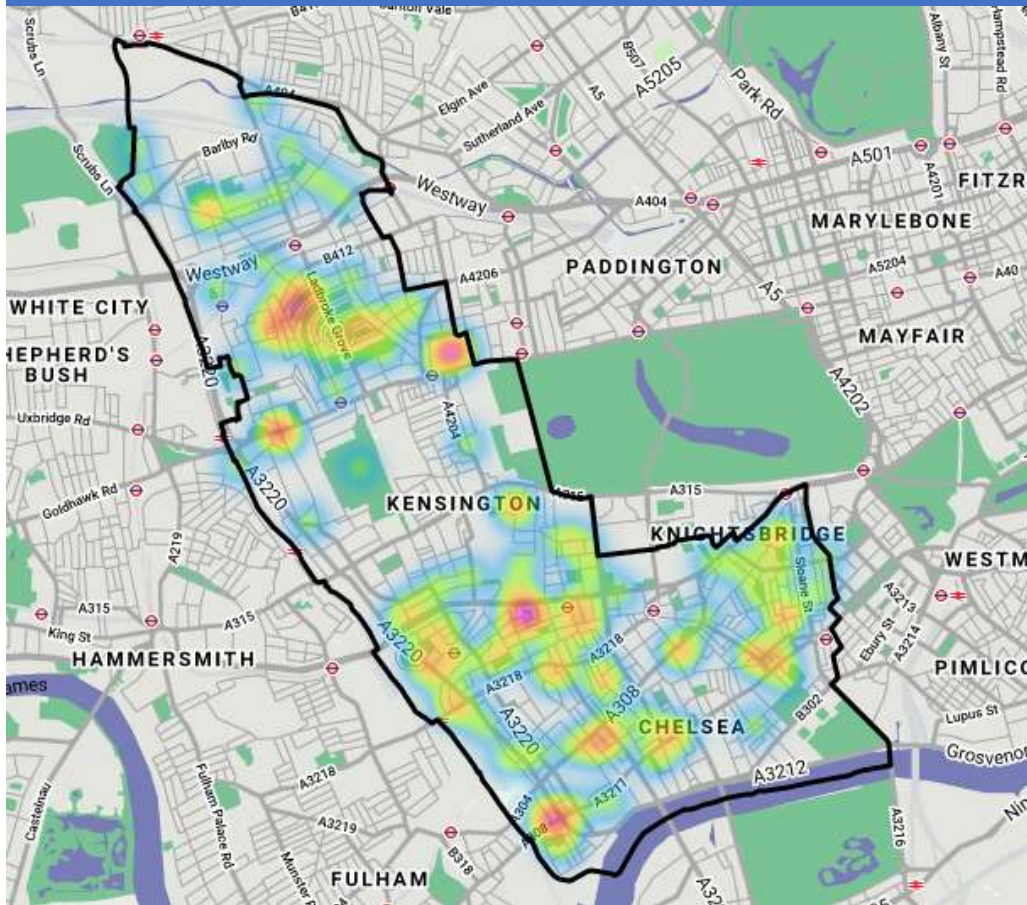
111 offences which is a decrease of 16 crimes compared to previous reporting period (127). Year on year shows an increase of 25 crimes (86). Last year trend shows an increase in the next reporting period.



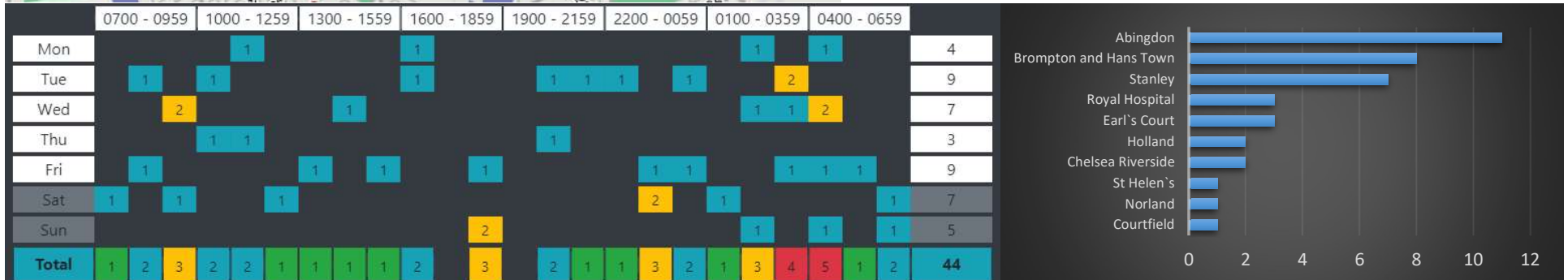
**METROPOLITAN
POLICE**

OFFICIAL

Non Residential Burglary



44 offences which is a decrease of 8 crimes compared to previous reporting period (52). Year on year shows a decrease of 10 crimes (54). Last year trend shows an increase in the next reporting period.



**METROPOLITAN
POLICE**

OFFICIAL