

The changing faces of the Royal Borough

Over recent months, more of our stalwart supporters in the statutory sector have chosen to move. We are sorry to see the end of what have been strong and important relationships for us as a sector.

Sir Merrick Cockell has stepped down as the leader of the council after 13 years in charge. Merrick took on the protective mantle that Joan Hanham had established for the local sector during her time as leader. Whilst we are sorry to see him go we look forward to working alongside his successor Cllr Nick Paget-Brown. We are optimistic that he will maintain the very special local bonds that have developed over the years.

Melanie Smith, the borough Director of Public Health, stepped down from her post at Easter, although many had expected her to head up the tri-borough public health team. Her departure came as a bit of a surprise but her team continues to support our sector by

engaging in a range of activities.

The Social Council is sad to lose a wonderful advocate of the sector, but wishes Melanie well in the future.

Derek Myers has also announced that he will be stepping down. He leaves his role as Chief Executive of Royal Borough Kensington and Chelsea and Hammersmith and Fulham at the end of the year.

He too, has championed our causes, attended our debates, and been an important influence, shaping a range of services across the sectors. Derek, who had been in charge of the Royal Borough for 11 years, was named as one of the most influential people in local government when he took on the role of helping to shape the tri-borough partnership across two boroughs. He will leave behind a strong legacy and we have confidence that his officers will continue his work. We wish him all the best for the future.

Change is now something we expect and know we can adapt to – even changes as rapid and surprising as these.

Keeping and developing key relationships is vital for the future



New council leader Nick Paget-Brown

of our sector. Come to one of our forums to meet your sector colleagues and statutory partners. Aim to stay strong during these turbulent and unpredictable times.

CONTACT US

Mary Gardiner 020 7243 9803
Chief Executive
mary@kcsc.org.uk

Harjit Dhaliwal 020 7243 9801
Office Manager
harjit@kcsc.org.uk

Organisational Development Team

Siobhan Sollis 020 7243 9807
Head of Organisational Development
siobhan@kcsc.org.uk

Brenda Namboozie 020 7243 9807
Development Officer
brenda@kcsc.org.uk

Katie Steingold 020 7243 9800
Events & Communications Officer
katie@kcsc.org.uk

Business Development Team

Lev Pedro 020 7243 9809
Business Development Manager
lev@kcsc.org.uk

Policy Development Team

Angela Spence 020 7243 9802
Deputy Chief Executive
angela@kcsc.org.uk

Mohammed Miah 020 7243 9808
Development Officer –
Partnership and Forums
mohammed@kcsc.org.uk

Ambika Sharma 020 7243 9804
Campaigns & Development Officer
ambika@kcsc.org.uk

Kuldip Bajwa 020 7243 9805
Information & Communications Officer
kuldip@kcsc.org.uk

KENSINGTON & CHELSEA SOCIAL COUNCIL

London Lighthouse
111-117 Lancaster Road
London W11 1QT

020 7243 9800

info@kcsc.org.uk
www.kcsc.org.uk

Charity no 1087457
Limited company no. 4146375

Kensington & Chelsea Social Council (KCSC)

works to support locally focused
voluntary and community
organisations serving local residents.

The views expressed in Link are not
necessarily those of KCSC.

Dalgarno Trust – Refurbished & Relaunch

The Dalgarno Trust has held a **double celebration** after re-opening its doors to the community following a major refurbishment and its unveiling of a new website and logo.

The launch event on 14 March was attended by key partners and stakeholders including the Mayor and marked the end of a five

month refurbishment project. During this time regular services never stopped, operating from other locations, however service users were delighted to be back in the centre. Responses to the design, layout and quality of the new spaces especially the café and reception area have been very positive.

A number of new services are being offered through the centre including:

- **Community Champions** – a project working with Dalgarno residents to raise awareness and signpost people to health services.
- **Life-coaching** – funded by City Living, Local Life and offering all St Charles residents both life-coaching and the opportunity to train to become a life-coach.
- **Oasis Garden Café** – freshly cooked food at reasonable prices run by Equal People.
- **Enterprise Hub** – offering a wide range of workshops, training and 1-1 support, to people who would like to start their own enterprise or work with others to develop social enterprises.

You can pop into the newly refurbished centre at 1 Webb Close, Dalgarno Way, W10 5QB or why not check out the new website to find out what's on offer?

More info:

www.dalgarnotrust.org.uk



Ready for action: the refurbished Dalgarno Centre



Community Centres to receive volunteering boost

Greater support for volunteering will benefit users of three community centre's in North Kensington following the appointment of a new part-time Shared Volunteer Coordinator.

The new post-holder, Michelle Poponne will divide her time equally between Meanwhile Gardens Community Association, the Venture Community Association and Al-Hasaniya Moroccan Women's Centre, all based in Golborne ward.

By helping to recruit and support volunteers Michelle will enable the community centres to offer more regular activities to local residents and will strengthen the existing links between the centres. You can contact Michelle on **020 8960 4600**, or at volunteer4rcommunity@gmail.com.

Community Gardening Comes to Golborne

A new community food garden on the corner of Southam Street and Golborne Road has been built by a group of volunteers. The space has been planted with peas, french beans, runner beans, courgettes, okra, aubergine, tomatoes, carrots and kohlrabi.

Project Co-Ordinator Ros Brooks explained "I didn't have a garden and wanted to try growing my own vegetables, TMO gave their permission and we applied for £500 from the Capital Clean Up fund".

Volunteers are needed each week for weeding, watering, harvesting and odd jobs. Anyone who would like to volunteer can email

farmthecitylondon@gmail.com. Once the food grows, everyone is welcome to pick it.

Ros added, "It's been wonderful meeting so many local people interested in joining in and it's a really sunny spot so we've got high hopes!"

The team behind the new garden are also involved in organising the Farm the City London festival which will take place at Meanwhile Gardens, W10 on Saturday 21 September.



More info:

www.farmthecitylondon.com
www.facebook.com/farmthecitylondon

Volunteer of the Year 2013 Award Winners Announced

Local volunteers had their contribution to the community recognised at an awards ceremony organised by the Volunteer Centre Kensington and Chelsea in early June.

The awards were spread over a number of categories in recognition of the diversity in volunteering in Kensington and Chelsea.



This year's winners are:

Volunteer of the Year:	Amar Yermak
Young volunteer of the year:	Sophia Pomiankowski
Volunteering through adversity:	Marissa Smith
Long service award:	Sonia Kent
Trustee of the year:	Sarah Young
Good neighbour award:	Sheila Taylor

The following people were also honoured for making a difference:

Peter Hodges	Christian Zaire
Lily Woldeesemait	Judith Steuart-Corry
Ali Movahdi Saveh Motlagh	Roland Saam
Helen Dobbie	Allan Entwistle
Trisha de Borchgrave	Lisa Cleveland
Evelyn Fleming	Paola Nanni
Trevor Sherman	John Huyser
Angela Byakwaga	Ken Millwood
Kimlynne Olivier	Joyce Oediala
Diana Onyango	Vincent Seabrook
Selina Moutia	Michael Crawshaw
Daniel Christian	Peter Ward
Rachel Huang	Claudia De Monte
Marta Andrada Barroso	Aida Maffei
Hirunika Perera	Christina Garcia
Erica Read	Maria Nossan
Sandra Doyle	Anita Malinovskaia
Anna Taylor	Sam Spencer
Rhinaix Duque-Thues	Graham Bird
Pragna Chalise	Philomena Dominique
Sean Hanna	Amina Charkaoui
Sheila Davies-Brook	Nora Touzani
Saeedah Ramezani	Karima Touzani
Larisa Marinova	Monera Takla
Frank Couzain	Fatima Aitlhadj
Ashwini Pradhan	Aribah Hammouda
Janet Meziani	Catherine Fison
Delilah Thompson	Elaine Ruth Reid

Touring Exhibition of Gypsy Roma Culture and Heritage

June is Gypsy Roma and Traveller History Month; a series of national awareness raising events. There are all sorts of activities including a touring exhibition arranged by the local Stables Way traveller community, which brings together miniature caravans and carts, traditional Roma dress, photographs, portraits and personal verse.

The exhibition is proud to announce that it will include part of Paul Wenham-Clarke's photographic exhibition, 'The Westway: a portrait of a community.' Currently the exhibition is showing at:

1 June:	Victoria & Albert Museum
3 - 13 June:	Central Library
13 - 18 June:	Cafe Nova
18 - 24 June:	North Ken Library
24 - 30 June:	Oxford Gardens (viewings by appointment with Miss Helena Ventham)
12 July:	Funders Fair, Kensington Town Hall.

More info:

yrweere@hotmail.co.uk



In need of advice?

Legal aid cuts – cause for concern

Legal aid cuts which came into force in April 2013 are of great concern to agencies providing advice to local residents in the borough.

Housing, employment, debt, welfare benefits and immigration advice have all removed from the scope of legal aid, affecting around 2,500 people in Kensington and Chelsea.

With the combination of welfare benefit changes and other austerity measures hitting some families hard, the need for good quality advice is more urgent than ever. However reduced funding will impact inevitably on how much support agencies can provide.

Despite the legal aid cut, good quality housing and welfare advice is still available in the borough. Here are the details of the main agencies you can contact.

Age UK Kensington and Chelsea ¹

1 Thorpe Close, W10 5XL

Information and advice drop in, telephone and appointment service at 1 Thorpe Close, Monday to Friday 9.30am to 5.30pm (closed 1pm - 2pm).

Sessions are open to all residents of Kensington and Chelsea who are aged 55+ and their carers and helpers.

020 8969 9105

information@aukc.org.uk

www.ageuk.org.uk/kensingtonandchelsea

Citizens Advice Bureau Kensington ²

Westway Information Centre,
140 Ladbroke Grove, W10 5ND

Drop in service on Monday, Tuesday, Wednesday and Friday 10am to 12.30pm or by prior appointment weekdays 10am to 4.30 pm.

Initial interview at drop in and thereafter prior appointment. Arabic speaker available.

0844 826 9708

www.adviceguide.org.uk

Citizens Advice Bureau – Chelsea ³

Chelsea Old Town Hall, Kings Road, SW3 5EE

Drop in service on Monday, Wednesday, Thursday and Friday 10am to 2.30pm or by prior appointment weekdays 10am to 4.30 pm.

Initial interview at drop in and thereafter prior appointment.
Arabic speaker available.

0844 826 9708

www.adviceguide.org.uk

North Kensington Law Centre ⁴

74 Golborne Road, W10 5PS

Open to visitors on Monday, Tuesday, Thursday and Friday 10am to 1pm and 2pm to 5pm but a prior appointment is necessary.

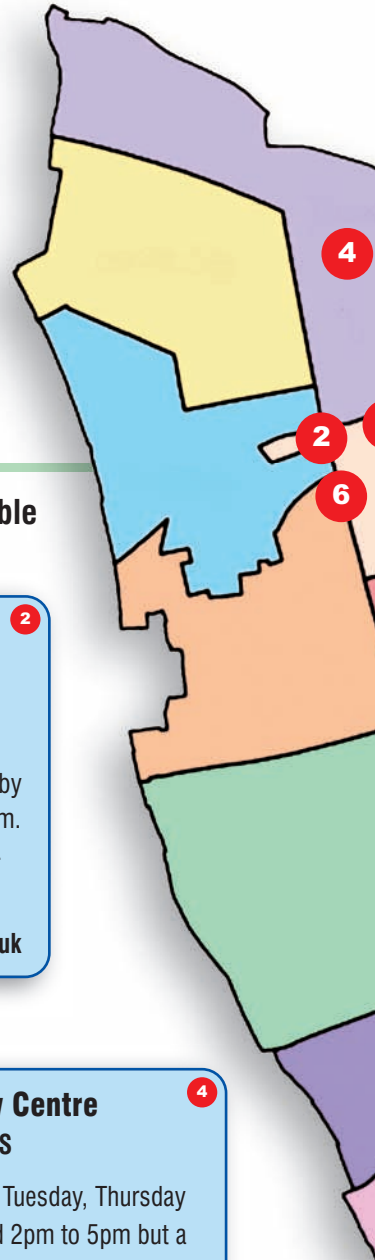
020 8969 7473 info@nklc.co.uk www.nklc.co.uk

TRANSITION FUNDING – A BOOST TO THE ADVICE SECTOR

Organisations that provide advice come in all shapes and sizes and are dealing with the fallout of welfare changes on a daily basis. The news that a partnership of advice agencies in Kensington and Chelsea has been successful in its application to the Big Lottery Advice Services Transition Fund is a welcome boost.

The Advice Services Transition Fund will help protect some advice services over the next two years but it is not a long term solution. It is hoped that by allowing agencies time to adapt new avenues of support for the local advice sector can be explored.

If you work for an advice giving agency in the borough and want to help shape the future of local support, why not attend the next meeting of the Kensington and Chelsea Advice Forum on 27 June. More info: www.kcsc.org.uk/kcaf



Help is available

The legal aid cut in Kensington and Chelsea is the biggest in London and this is one of the reasons the borough was chosen as one of five across the UK to be surveyed by the Low Commission. The commission is investigating the impact of the loss of legal aid on the local advice sector and is due to consult on emerging findings in September, before publishing a final report in December 2013.

Earlier this year, members of the Kensington and Chelsea Advice Forum issued a paper in which they highlighted major concerns about the coming legal aid reform. The report 'Legal Aid Reform – the impact of the Legal Aid, Sentencing and Punishment of Offenders Bill' can be downloaded from the Social Council website. www.kcsc.org.uk/news/legal-aid-reform-poses-threat-local-advice-services

Nucleus Advice Centre

298 Old Brompton Road, SW5 9JF

Drop in service on Monday 1.30pm to 4pm, Tuesday 3.30pm to 6pm and Thursday 10am to 12.30pm to Kensington and Chelsea residents. Initial interview must be at drop in or by prior appointment. Telephone advice is Monday to Friday 9.30am to 5pm.

020 7373 4005

www.nucleus.org.uk

Staying First

Mulliner House, Flanders Road, W4 1NN

Two drop in sessions each week - Tuesdays 5pm to 7pm at the Westway Information Centre, W10 and Thursdays 3pm to 5pm at the Brompton Library SW5. Telephone advice is available on Monday to Friday 10.30am - 3.30pm

020 8996 8900

www.sbhg.co.uk

World's End Neighbourhood Advice Centre

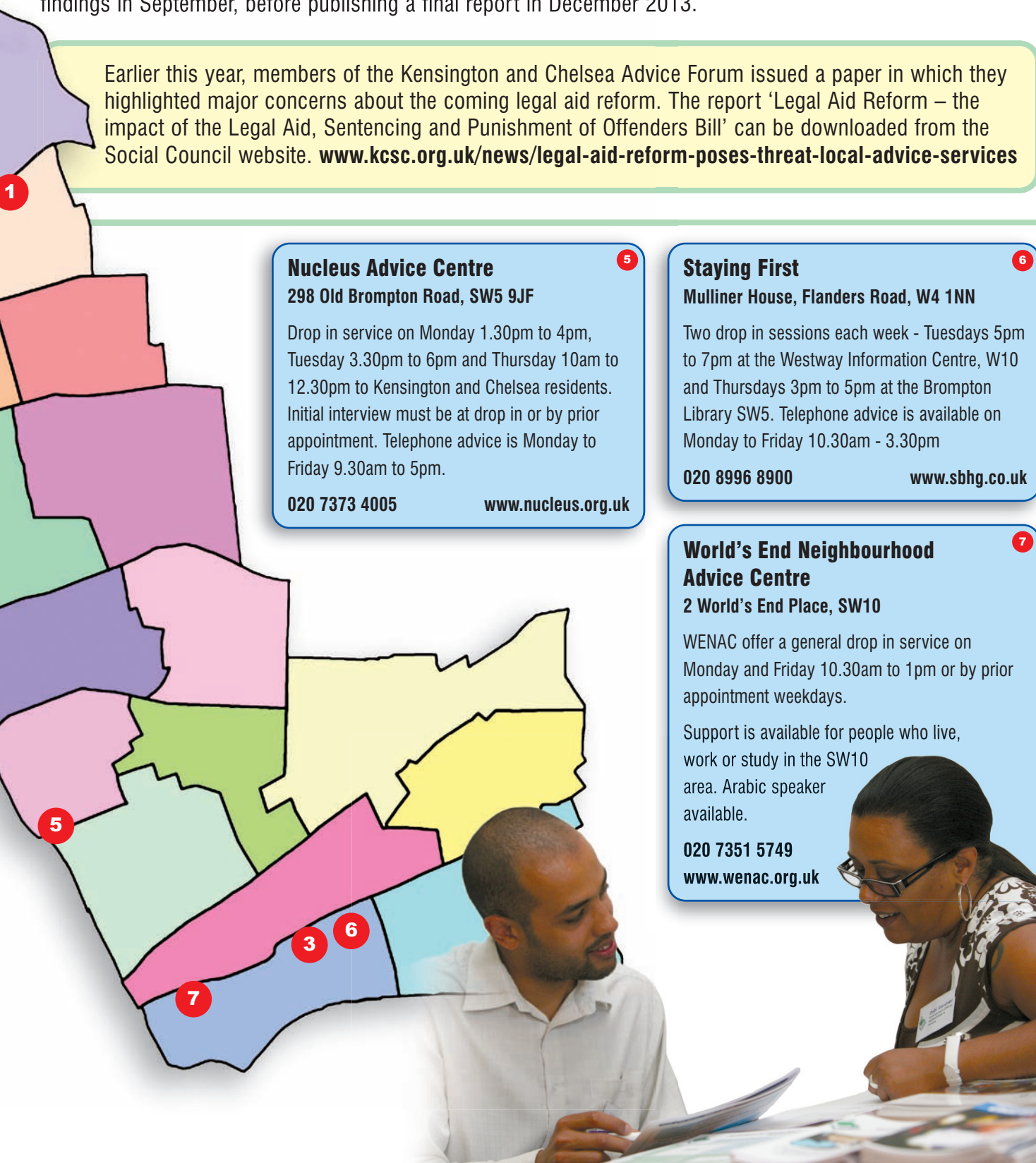
2 World's End Place, SW10

WENAC offer a general drop in service on Monday and Friday 10.30am to 1pm or by prior appointment weekdays.

Support is available for people who live, work or study in the SW10 area. Arabic speaker available.

020 7351 5749

www.wenac.org.uk



TIMES ARE

for our communities, for our vo

There are many things that the Royal Borough can be proud of.
and community sector and for a long time

The great diversity in the make-up of our communities and good co

Yet, as financial pressures mount on residents, voluntary
unfavourable change whic

The challenge facing our communities

The changes to the benefits system have been well-documented, and even though some cuts have yet to take effect they are having a major impact.

Whilst the financial safety net protecting the vulnerable and those who may temporarily fall on hard times is being tightened, living costs continue to rise.

Residents, many of whom are in work but who've had to rely on state support to meet sky high rents, are facing stark choices. Some will have to leave the borough as a benefit cap is introduced. Others in social housing, whose homes are now deemed too large, may have to leave due to the "bedroom tax".

Little consideration seems to have been given to the impact on those affected; the strain of moving and starting afresh, lengthy commutes to hold down jobs or to keep children in local schools, the lost local connections.

Rising Costs

In recent years and even months many families and individuals have seen their utility bills soar. This is particularly tough for those on lower incomes. In our borough some families have also been asked to pay £225 per child for bespoke school uniforms and have had to

borrow to meet these costs. Despite this, as many as 24,500 residents are excluded by the mainstream lending banks and regularly turn to pay day lenders, loan-sharks or pawn brokers to make ends meet.

Some, including many third and fourth generation residents, will be feeling that their value is weighed solely by their household income.

Housing needs

Regardless of the great need to find local social housing in the borough new homes like those in the new Wornington Green development are priced beyond the vast majority of local people. Instead they are being marketed overseas, in the Far East.

The 2011 Census showed that there were already over 9,300 second homes in the borough. Many of these will have been bought as investment opportunities to take advantage of property prices that keep rising and currently lie empty. In the 2011 Census, Kensington and Chelsea actually recorded a slight drop in population over the previous decade. It was the only borough in London to do so.

So is any of this fair? Is fairness even important anymore?

The things we value

Last year we undertook a listening exercise on the streets of Golborne, asking people what they liked best about their neighbourhood.



As Kensington and Chelsea copes with rapid ch
communities are consid

Overwhelmingly, people pointed to the rich mix of communities, the vibrant atmosphere this created and the neighbourliness that flows from an element of familiarity.

The changes being effected now in the borough threaten to undo some of these elements. We stand to lose the very essence of what makes Kensington and Chelsea such a special place for so many of us.

Some will think there is little we can do about this but should we stop trying?

CHANGING...

Voluntary sector, for our borough

We have good schools, both state and private, a great voluntary sector, we have had excellent statutory services.

Community relations are also things on which we place a great value.

Our organisations, and also the statutory sector, the result is that it will be difficult to reverse.



Change we must ensure the interests of our existing communities are protected by decision makers

We must sustain our wonderful work and not shy away from the challenges and difficulties we face.

In 2012 the Royal Borough of Kensington & Chelsea placed 884 homeless households in temporary accommodation outside of the borough. Most were placed in outer London boroughs. Some were moved to Manchester, Hertfordshire and the Kent coast.



The challenge facing the voluntary sector

It is in difficult times like these that we should remember why our local voluntary and community sector exists. We should remember how we came into existence – to bring together and support fragmented communities and to stand up for those who needed a voice.

Leaders and decision makers will be facing pressure from all sides. We have an important role to play as a sector. We can help ensure that the voice of our existing communities is heard in this debate.

Austerity measures are having a huge impact on communities up and down the country, leaving some of the most vulnerable more dependent on the services and support of their voluntary sector organisations.

However as financial pressures mount and funding for charitable work becomes increasingly difficult to obtain organisations are struggling to cope with the strain. The very services that are now more vital than ever for hard pressed communities are being

cut. Recent research conducted on behalf of the Joseph Rowntree Foundation and Locality has shown that, around the country, smaller grassroots groups are particularly vulnerable.

In May NCVO updated its 2011 'Counting the Cuts' report in which it paints a sobering picture of the years that lie ahead. Assuming that cuts are distributed proportionally, nationwide charity income is expected to be £1.7 billion (12%) lower in 2017/18 than it was in 2010/11.

The local picture

Here in Kensington and Chelsea, the majority of council funded groups have faced reductions in funding in each of the last two years. However, the local voluntary and community sector has not seen the widespread cuts that have been witnessed in some neighbouring boroughs.

With a newly installed council leader and a new council chief executive to take over before the end of the year there is a level of uncertainty that exists across the local sector. We have worked hard and well locally to build good relations. We remain confident that our local statutory authorities will continue to back the sector and recognise the valuable work we do in supporting local residents in Kensington and Chelsea, particularly when so many are struggling.

Know your community rights

Community Rights are sets of powers which devolve power from the central government to communities, local authorities and individuals.

They are part of the Localism Act which came into effect through various stages in 2012.

There are four Community Rights:

- **The Right to Bid**

Aims to keep valued land and buildings in community use by giving local people the chance to bid to buy them, if and when they come onto the market

- **The Right to Build**

A new way for communities to choose for themselves where and when to build homes, shops, facilities and

businesses – putting power back into the hands of local people where it belongs

- **The Right to Challenge**

Enables communities to challenge to take over local services that they think they can run differently and more effectively. This could be used to run a wide range of local services

- **Neighbourhood planning**

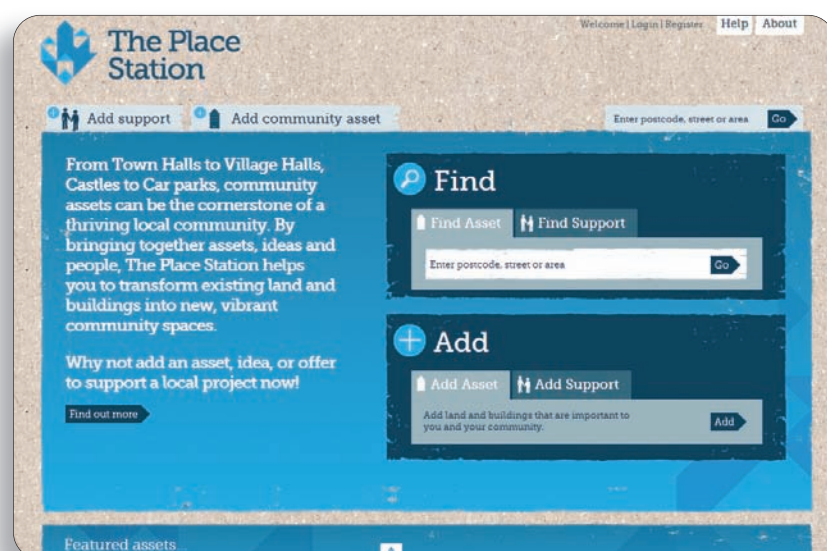
This is intended to give communities more of a say in the development of their local area.

What does that mean for us in Kensington and Chelsea?

The Social Council wants to work with local people, local groups and the Council to make sure this is of real benefit locally. We can give advice and information on community rights and support you with the formal processes.

For example, under Right to Bid, if there is a building that is very valuable to a local community, the building can be registered as an asset of community value. We can help you understand what buildings are eligible and guide you through this process.

Locality, the national network for community-led organisations have set up a dedicated website <http://mycommunityrights.org.uk>. We can highly recommend this resource which has a wealth of information on community rights.



www.theplacestation.org.uk is another useful website to visit. It lists buildings that local communities have registered as assets of value and agencies that can support communities to bid to buy them. Anyone can contribute to this.

Preventing the “supermarketisation” of public service – the Social Value Act

Public authorities such as the Royal Borough of Kensington and Chelsea and the NHS are now duty bound to consider social value when awarding contracts.

This change in procurement practice became live earlier this year following the introduction of the 2012 Social Value Act.

Procurement officers should no longer be looking to award contracts on cost considerations alone. The added social and environmental value that any prospective provider provides should now be a factor in the decision making process.

The Government defines social value as, *“a concept which seeks to maximise the additional benefit that can be created by procuring or commissioning goods and*

services, above and beyond the benefit of merely the goods and services themselves”.

In theory, this should place charitable organisations in a stronger position and help level the playing field a little against large private sector providers who are primarily concerned with returning a profit.

The work our sector does to support the vulnerable, strengthen communities and empower citizens is by definition work of social value.

At a time when public authorities around the country are looking to make savings, the Social Value Act is an important provision that should remind the authorities that their responsibilities lie further than just cost cutting.

In Kensington and Chelsea, we must ensure our council and NHS commissioners implement the Act in the spirit in which the original Private Members Bill was tabled.

The Social Value Act was initiated via a Private Members Bill proposed by Conservative backbench MP Chris White.

He coined the phrase ‘supermarketisation’ to refer to the way public service outsourcing seemingly awards contracts to the lowest bidder. In the bills second reading he said:

“What I believe in, is a future in which our public services are run by communities and the organisations close to them that have a sense of responsibility and put people before profit.”



More info:

www.kcsc.org.uk/news/social-value-and-what-it-means-voluntary-sector

CHANGE FOR CHILDREN

Since September 2012, the Change for Children project has been working with 35 local children and families organisations across Kensington and Chelsea.

The project aims to combat child poverty by researching ways in which groups can be more responsive to their users’ needs during this period of austerity and hardship.

Since its launch the project has carried out over 200 surveys with local residents. The questions enquired about family life and aimed to discover how people were coping with and adapting to the tough economic climate. Case studies and interviews have also formed part of the data gathering phase.

The information collected is now being studied to see what patterns and trends are emerging and the results will be shared in July.

In the follow up to this, Change for Children will look at how organisations can work more collaboratively with one another in order to provide the most effective services for their users.

If you would like to submit any case studies or get involved in the project, please get in touch.



More info: Ambika@kcsc.org.uk

www.kcsc.org.uk/change-for-children

020 7243 9806

Community services working towards better health and wellbeing

It is essential to not only provide services to improve health and wellbeing in the borough, but to ensure those services are known and accessible to those who might need them.

A number of voluntary and community sector services are currently working in Kensington and Chelsea to improve access to health and wellbeing support. They work to facilitate engagement, provide signposting and in some cases offer hands on support to residents who may otherwise struggle to find the help they need.

Here is a list of some of the community services doing this work.

Health Trainers – Westway Development Trust

One to one support providing motivational sessions, setting health goals and behaviour change through coaching.

Where is the service delivered?

In community settings. Flexible but not in people's homes.

More info: healthtrainers@westway.org 020 8962 5730
www.healthtrainerskandc.co.uk

Dalgarno Community Champions – Dalgarno Neighbourhood Trust

Signposting service; for example mental health. Promoting local services

Health Works – Dalgarno Neighbourhood Trust

Primarily aimed at group facilitation. DNT leads a consortium of small BME groups to help them to improve access to health services.

Where is the service delivered?

In community settings, mainly Dalgarno Community Centre (not in homes).

More info: www.dalgarnotrust.org.uk 020 8969 6300

Primary Care Navigators and Wayfinders – Age UK Kensington & Chelsea

Act as a bridge between GPs and community health and social care services with aim of preventing unplanned care. Engagement ranges from signposting to longer case work.

Where is the service delivered?

In patients' homes, in community settings or at the surgery.

More info: wayfinder@ackc.org.uk 020 8969 9105
www.ageuk.org.uk kensingtonandchelsea.wayfinderkc.org.uk

Navigators at Earl's Court Centre for Health and Wellbeing – Turning Point

Helping patients to navigate the services within Turning Point.

The aim is to become an information hub for local area.

Where is the service delivered?

At Earl's Court Centre for Health and Wellbeing

More info: www.echwc.nhs.uk/Turning_Point 020 7341 0300

Patient Participation Group (PPG) – Healthwatch

Supports GP practice managers to set up Patient Reference Groups in surgeries.

Where is the service delivered?

Currently in surgeries; could go to localities to take into consideration variety in surgery sizes.

Information service

This new service will focus on signposting and filling gaps in information services across the tri-borough area.

Where is the service delivered?

By phone and website.

More info: healthwatchkc@hestia.org 020 8968 7049
www.healthwatchkc.co.uk



The new independent consumer champion for health and social care was officially launched in April. Taking over from K&C LINK, the new organisation is part of wider network Healthwatch England and will work closely alongside sister organisations in Hammersmith and Fulham and Westminster.

Healthwatch will be offering a new information and advice service to help people access and make choices about services to support people if they need help to complain about NHS services.

Current priorities areas are Young People, Hospital discharge, Personalisation, out of hospital and Cancer.



More info: healthwatchkc@hestia.org
www.healthwatchkc.co.uk

Transforming Local Infrastructure is an 18-month project funded by the Office for Civil Society. It's core aim is to make the local voluntary sector more resilient in the current economic climate.

Building stronger support for the sector and Kensington and Chelsea's communities

As we enter into the last few months of TLI funding, it has been a busy time in terms of thinking about our future and how we strengthen our support to both the sector and to local communities more broadly.

We have been exploring two possible merger options – either with the Community and Voluntary Sector Association (CaVSA) in Hammersmith and Fulham, or with the Volunteer Centre (VCKC) in Kensington and Chelsea.

A merge with CaVSA has the advantage of strengthening the role of the CVS across two boroughs, whilst a merge with VCKC brings together volunteering with voluntary sector action in Kensington and Chelsea.

Perhaps more importantly than a possible merge, we also want to change how we work to bring us closer to the community, and the civil society and volunteering activity which supports its diverse challenges. In reality, this will mean moving from being based in one building to being more physically present within the different localities.

A smaller operational, core team will enable the majority of our staff to be more accessible and able to work directly with others to both build up an

evidence base of the needs and challenges for the community and the sector, and design services and training in partnership with those who are most likely to benefit from it.

To reach a broader range of beneficiaries with what is likely to be less resources and staff, we recognise we will have to prioritise by working in collaboration with others and identifying the greatest needs and the gaps in provision. Much of our traditional support can also be offered through a web portal – such as signposting, volunteering databases and e-learning courses.

The outcome of all these explorations will not be known until the end of June, but whatever decisions are made, we are certain that we will have developed a long term strategic plan that will prepare us and the sector in Kensington and Chelsea for an uncertain future.

We will also have stronger relationships and partnership with both CaVSA and VCKC, regardless of whether a merge goes ahead. All of this, we believe, can only benefit the communities we serve.

More info:

www.kcsc.org.uk/tli

New website coming soon – Local Action Kensington and Chelsea

As part of the TLI project we will soon be launching a joint website portal in July, Local Action Kensington and Chelsea. It will bring together information and local voluntary sector support services for the first time. It will mean local organisations can access a number of existing resources in one place.

We hope the site will be a springboard for action in the community and you can benefit by using the site to publicise your activities and news

and participate in discussion.

Local Action Kensington and Chelsea will be launched at our Funding Fair in July 2013.



LOCAL ACTION
KENSINGTON & CHELSEA





UPCOMING EVENTS

Training from the Social Council

The Future of Fundraising

The Future of Fundraising – Is alternative fundraising right for you?

Tuesday 25 June, 5.30 – 7.45pm

Have you heard of the Big Society Bank or Adventure Capitalist fund? Are you wondering how you can finance a social enterprise? Loans and social investment are not suitable for every organisation. Find out if they're right for yours.

The roles and responsibilities of trustees

Thursday 20 June, 6.15 – 8.30pm

If you are a voluntary and community sector trustee or senior worker at an organisation in Kensington and Chelsea and are new to the role or just want to brush up on your knowledge this training is for you. Delivered as part of the Get on Board trustee support project.

Book and receive a discount. Free for trustees and small organisations!

Also coming up...

Training This summer we are also planning additional training in Presentation Skills, How to Run an AGM and Managing Risk.

Tours We will also be offering new sector staff and trustees a tour of some of Kensington and Chelsea's voluntary and community organisations – a chance to glimpse the daily work that goes on to support local communities.

Twilight Club If you are interested in meeting up informally to network and share information and with your colleagues from across the sector why not attend our new after work Twilight Club?

Voluntary Organisations Forums

The Voluntary Organisations Forums (VOFs) are your chance to discuss the issues that matter locally with your colleagues from across the sector. All VOFs are held at Kensington Town Hall.

Engaging Communities VOF
Children, Young People & Families VOF
Health & Wellbeing VOF
Main VOF

Wednesday 19 June, 10am – 12.30pm
Tuesday 16 July, 10am – 12.30pm
Tuesday 23 July, 10am – 12.30pm
Tuesday 10 September, 9.45am – 1pm

FUNDING FAIR 2013

Friday 12 July, 10am – 3.30pm, Kensington Town Hall

The annual funding and development event for local voluntary and community organisations. Once again, this year we will be hosting a joint day with our colleagues from Hammersmith and Fulham and Westminster.

A chance to meet with funders, pick up tips to improve your fundraising and learn about new ways to generate income.

- Browse stalls and talk directly to funders and voluntary support agencies
- Attend workshops to learn the latest about funding and other ways to build your organisation
- Network with voluntary sector colleagues from across the three boroughs.



The latest details of all Social Council events can be found on our website or give us a call to find out more.

www.kcsc.org.uk/events
 020 7243 9800