



# The National Lottery Heritage Fund

Jasmine Bullock

Patricia Lichst

Tri-Borough Funders Fair 29.09.2022

[heritagefund.org.uk](https://heritagefund.org.uk)

Engagement Managers

London & South Engagement Team

## Webinar Aims:

- Inspire you to develop your own heritage project idea
- Explore some key elements to plan a heritage project
- Questions



GRUNWICK 40

We are the

LIONS

# Who we are

**Jasmine Bullock**  
**Patricia Lichst**

Engagement Managers

**London & South Team**



- Set up in 1994
- All the funding that we distribute comes from the sales of National Lottery tickets
- £3.2 billion awarded to 15,000 projects in London & South
- In the last 20 years, £512,270,126 was awarded to projects in this Tri-borough (625 projects)

# National Lottery Grants for Heritage

Small	Medium	Large
£3k-£10k	£10,000 - £250,000	£250k-£5m
Single-Round Application	Single-Round Application	Two Round Application (Development and Delivery)
Regional team decision	Regional team decision	Committee decision
No deadlines	No deadlines	Quarterly deadlines
8 week decision	8 week decision	12 week decision
Max 1 Year	Max 5 Years	Max 7 Years (2 years development and 5 years delivery)
	{ Project enquiry advice service }	{ Expression of Interest }



# What we fund?

Projects that connect people **with heritage** in the UK

## What we mean by heritage?

Anything from the past that you value and want to pass on to future generations





# 1. Community Heritage

Memories & Reminiscences



Cultural Traditions: food, dance



Sport





# Community Heritage (continues)

Crafts: blacksmithing,  
basket weaving



Dialects



Music



Festivals: Mela, Durga Puja





# 2. Nature and Landscape

Improve habitats and conserve species

Using nature to improve well-being





# 3. Industrial, Maritime and Transport Heritage



Thames River  
Image: Wikipedia



The Hammersmith Lamp Factory 1881  
(Image: Lamptech)

# 4. Museums, Libraries and Archives

Islington LGBT archive



Museums





# 5. Built Heritage

## The Royal Hospital Chelsea



## Emery Walker's House



## St Mary Le Strand Church





## Case study - Kensington & Chelsea:

### Mapping Memory Routes of Moroccan Communities

Aldaterra Projects

Awarded £10,000

**Heritage:** The memories of British Moroccans everyday lives and experience of migration.

### Activities:

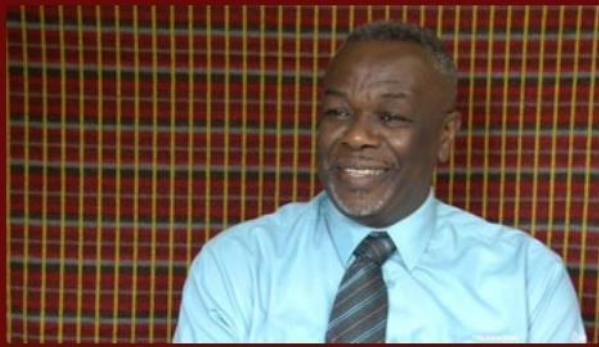
- Engaged 44 members of the Moroccan community in West London in Memory Sessions
- Produced a multisensory immersive installation to explore memory





▶ 0:00 / 34:45

Mike Hawke, On the buses 1979-2015



▶ 0:00 / 36:55

Roy Heath, On the buses -ongoing

## Case study – Westminster-

### Fares Please! An Oral History of London Bus Workers

digital:works

**Partners:** Westminster Archives and London Transport Museum

Awarded £39,700

**Heritage:** Memories of the lives of London bus workers.

### Activities:

- Primary school children interviewed London bus workers
- Engaged children in research, museum visits, and guided trips
- Used interviews to create a documentary film, a Key Stage 2 Education Resource Pack and an exhibition



## Case study - Hammesmith & Fulham- Shepherd's Bush Market

Urbanwise.London  
Awarded £9,500

**Heritage:** The memories of Shepherd's Bush Market and the professionals who work there

### Activities:

- Produced a series of lesson plans on exploring local heritage
- Created a film on how the school children explored Shepherd's Bush Market's heritage.
- Created a drama piece about the market's history.





**Heritage:** Recording the populations of specific species of mice, shrews and voles at 8 woodland habitats in West London

**Activities:**

- Training 25 volunteers to monitor small mammals in 8 woodland sites
- Training on species identification
- 23 events: woodland walks, public talks and festivals

**Case Study:**  
**Vole Patrol**

Awarded: £97,200



## Case Study:

### The South East Asian Food tradition of Kimchi

Awarded: £53,300

**Heritage:** documented people's memories about Kimchi's preparation

#### **Activities:**

- Recorded 25 oral histories
- Collected recipes from people
- 3 touring exhibitions
- Workshops
- Produced an online book of recipes
- Visits to the museum (pots collection)





## Case Study:

### Grime Waltham Forest

Oral and visual heritage archive

Partner: Vestry House Museum

Awarded: £37,700

**Heritage:** memories of Grime artists, producers & promoters of the Borough

### Activities:

- Youth-led research interviews with Grime artists
- Training on film making, oral history interviewing, blogging, photography
- Film screenings
- Talks, gigs, workshops



# Heritage Project key components





# Who can apply?

- Charities, trusts, charitable incorporated organisations
- Community and voluntary groups
- Community/parish councils
- Community interest companies
- Faith- based or church organisations
- Other public sector organisations



# Our funding priorities

## Priority groups (Inclusion):

- First time applicants
- Young people 11-25
- People from diverse ethnic communities
- Disabled people
- LGBT +
- People on low income

## Heritage priorities:


- Community & local heritage
- Landscapes & nature







# We want to support the Tri-borough heritage!

- Sign up for our **First Time Applicant webinar**
- Have an informal chat with us
- Submit a **Project Enquiry Form**  **Feedback**

Drop us an email:

[Jasmine.Bullock@heritagefund.org.uk](mailto:Jasmine.Bullock@heritagefund.org.uk)

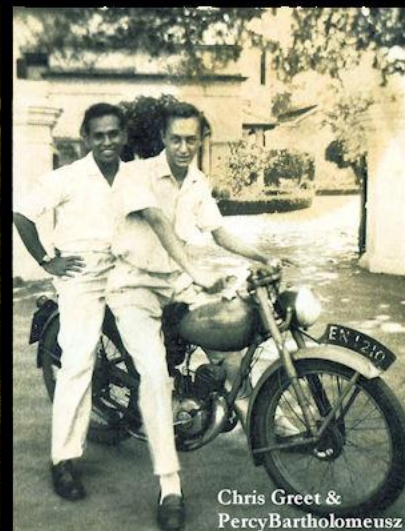
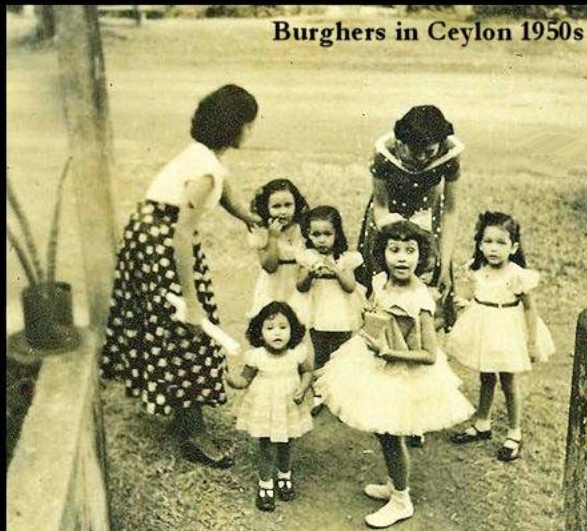
[Patricia.Lichst@heritagefund.org.uk](mailto:Patricia.Lichst@heritagefund.org.uk)

# Thank you!



@HeritageFundL\_S

[www.heritagefund.org.uk](http://www.heritagefund.org.uk)



Stories of migration of the Ceylonese community