



Kensington and Chelsea Community Enterprises Ltd


Set up February 2012

Company Number: 07966499

Asset-locked to KCSC

Key Facts – The setting up of the CiC

- KCSC led an initiative back in 2011 to bring voluntary and community organisations together to look at the possibility of bidding and running what is now the Earls Court Health and Wellbeing Centre. It was the first attempt to develop a health and wellbeing consortium. Although it was not a formal partnership structure it was an alliance of organisations working together. Unfortunately that bid failed and was won instead by Turning Point.
- In 2011 KCSC received funding from central government for local infrastructure organisations to review and develop new transformative ways of working. Part of this work following consultation resulted in the setting up of a Community Interest Company we call Kensington and Chelsea Community Enterprises Ltd.



KCCE – the
next phase..

Transformation of KCCE: timeline

- Transformation Lead role starts at KCSC - March 2018
- Transformation Steering & Design Groups set up – April 2018
- Charity consortium agrees to use the CIC as its vehicle – July 2018
- Transformation Action Group formed - December 2018
- Memorandum of Understanding - January 2019
- New governance structure for the CIC - May 2019
- Revised Memorandum & Articles - June 2019

Transformation of KCCE: next steps

- Transformation Action Group becomes pseudo- Board of Directors
- In September – October 2019:
 - 3 CIC Directors agreed amended Memorandum & Articles
 - 3 CIC shareholders transferred their shares to KCSC
 - 2 out of 3 previous Directors resigned
 - 5 new Directors formally appointed at Companies House
- CIC named 'Community Health West London'
- First official Directors' meeting held March 2020

CIC objects

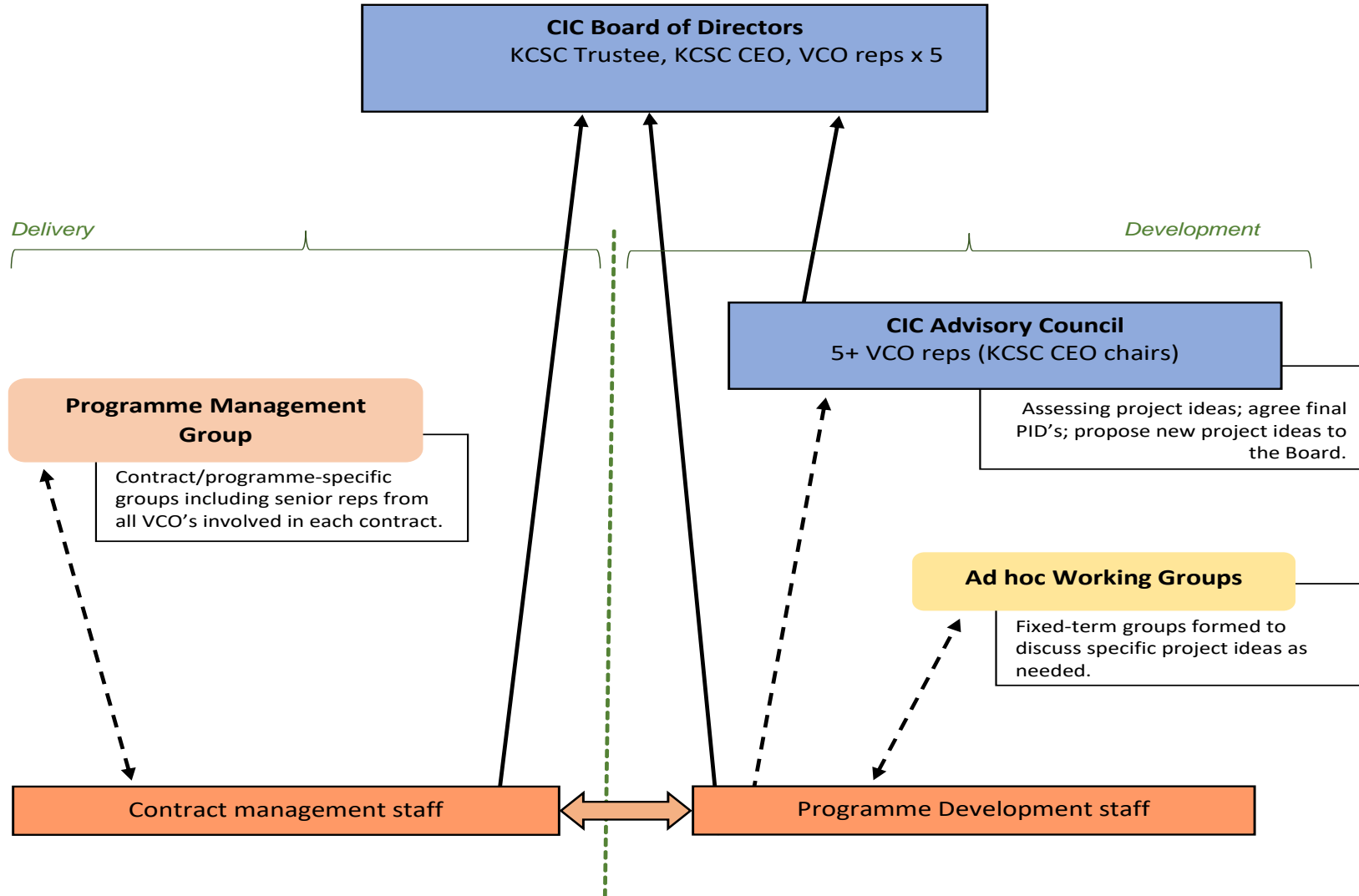
Objects (Memorandum & Articles)

- The objects of the Company are to carry on activities which benefit the community and in particular (without limitation) to provide a vehicle for organising and managing consortia of voluntary and community organisations, principally but not exclusively in the Royal Borough of Kensington and Chelsea, to assist those organisations to contract with public sector organisations, and to support and train those organisations to develop their systems, policies and practices, for the benefit of the inhabitants of Kensington and Chelsea and any other areas.

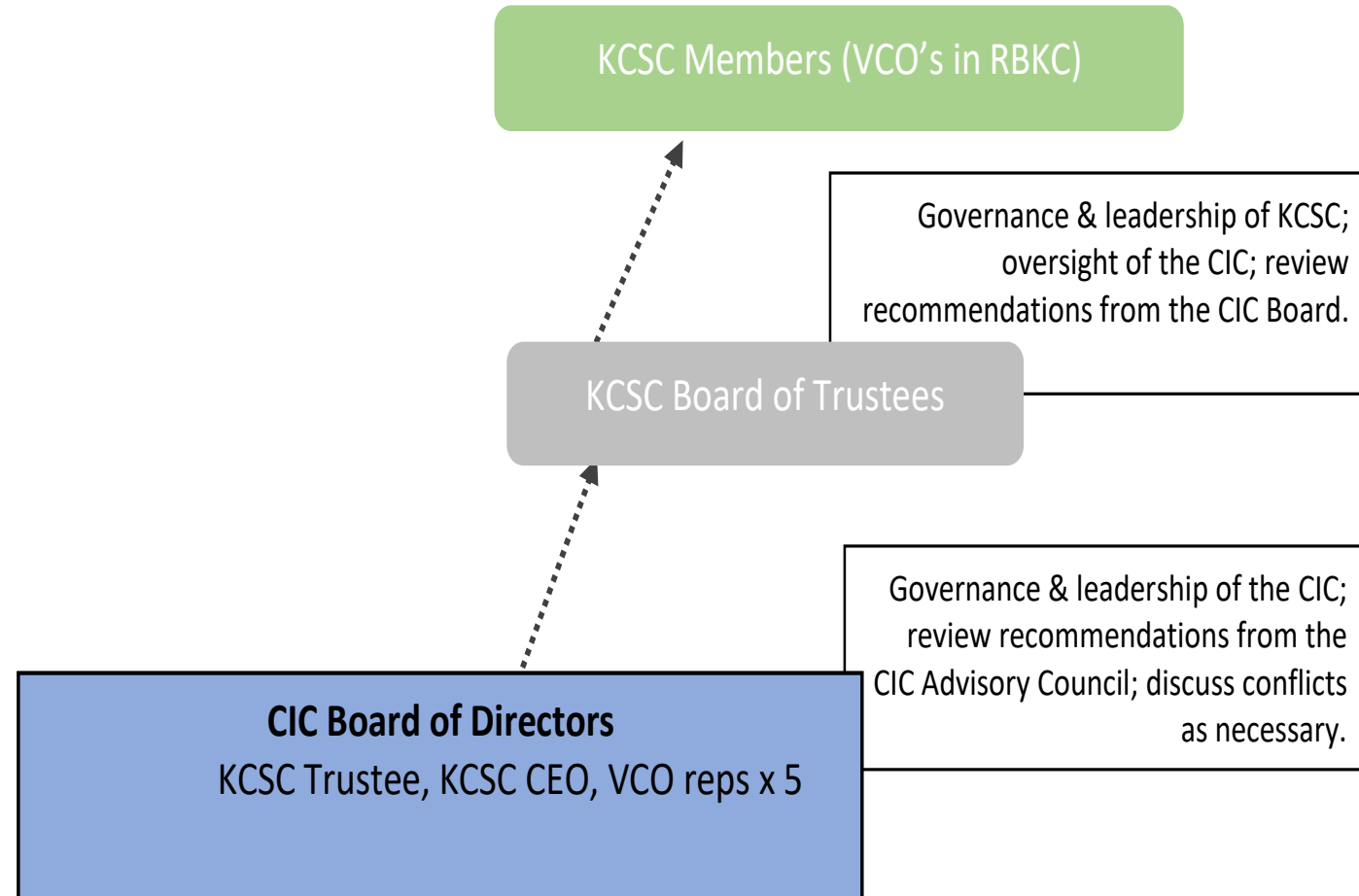
Strapline for the CIC website

- The aim of Community Health West London is to improve people's health and wellbeing, work towards the reduction of health inequality and ensure equality of access to services.

CIC structure



CIC and KCSC



What's next?

- New NW London CCG, NW London VCS Group and 5 new Primary Care networks
- Intensive intelligence-gathering and relationship-building
- Identify key contacts and potential funders/contracts for the CIC
- Appoint the 7th Director – a KCSC Trustee
- Maintain wider sector involvement and communications

Any questions?