

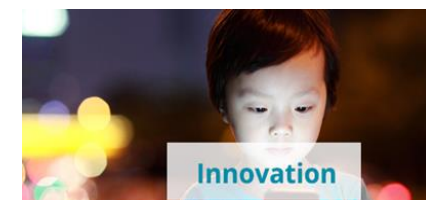
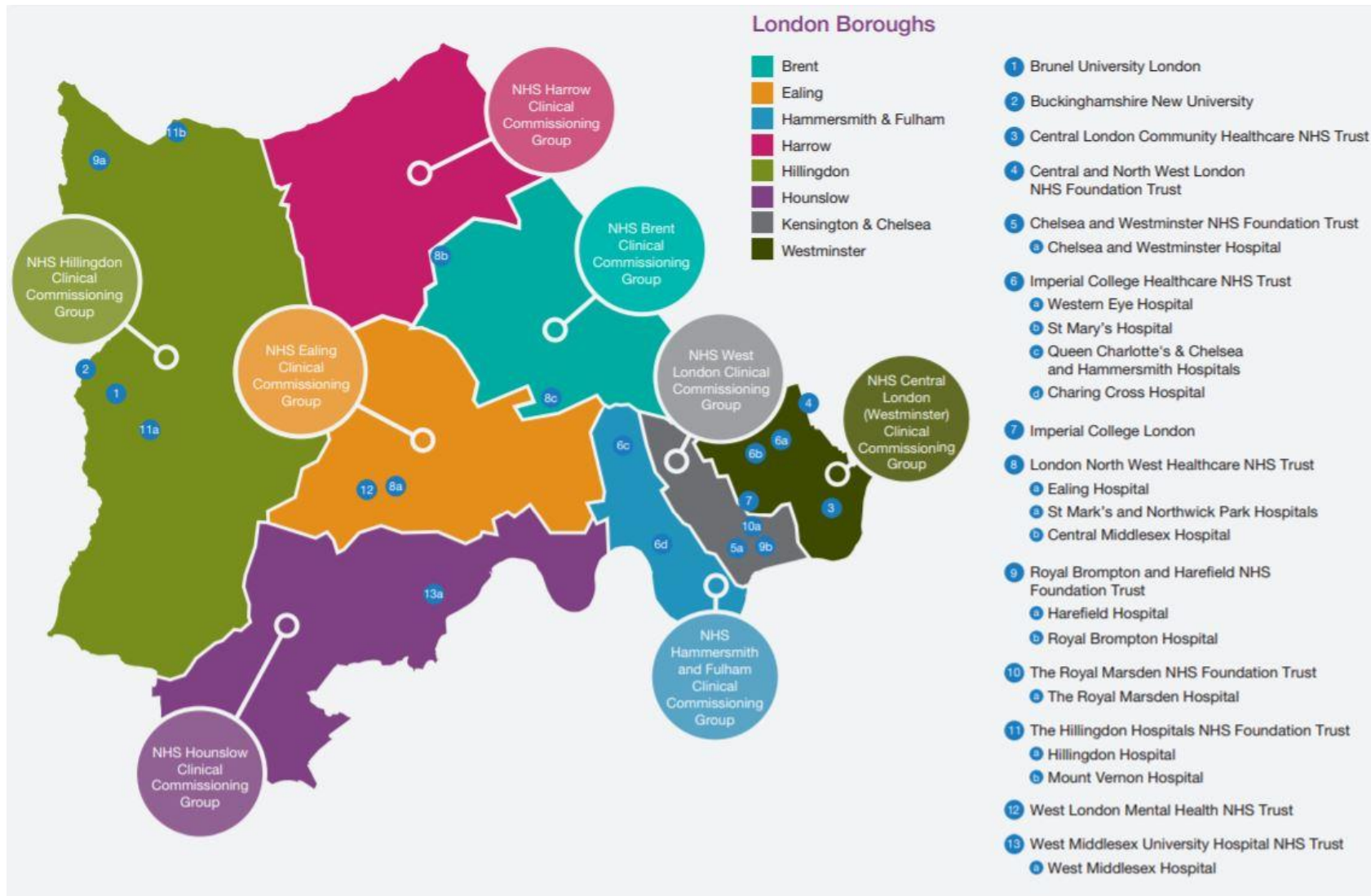


Introduction to Discover: North West London's Health Research Platform

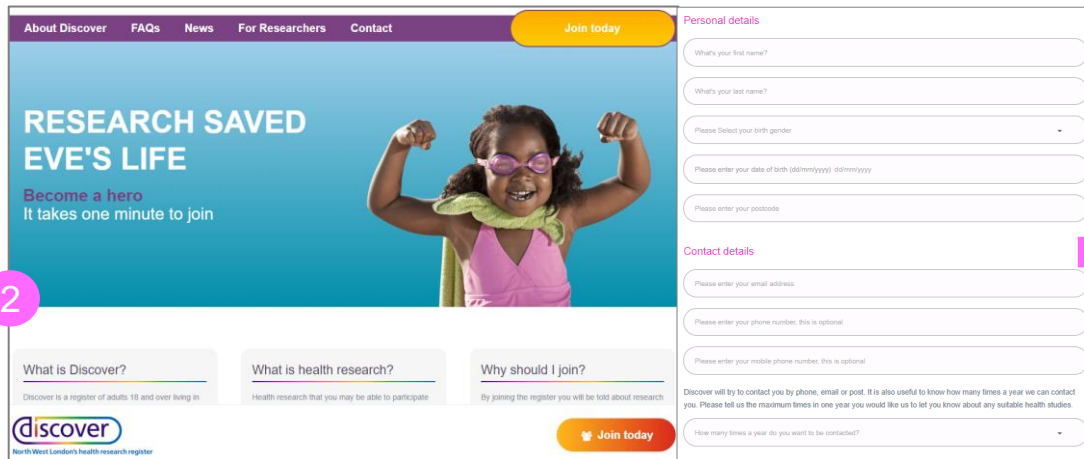
Matt Cooper, Voluntary Sector Lead for Discover

July 2018

Imperial College Health Partners support innovation and change in the NHS. We are the designated Academic Health Science Network for NW London



The Discover patient register, combined with the WSIC dataset, can enable a more effective research-ready marketplace in NW London



2



1

3

Adult consent to contact register: giving consent to be contacted about opportunities to support health research. Anyone registered to a GP in NW London eligible, irrespective of their health need

Dataset which links de-identified patient records across primary care, acute, mental health, community and social care data for over 2.2m residents

Support research sector



Researcher wants to test hypothesis

1

Understands study feasibility

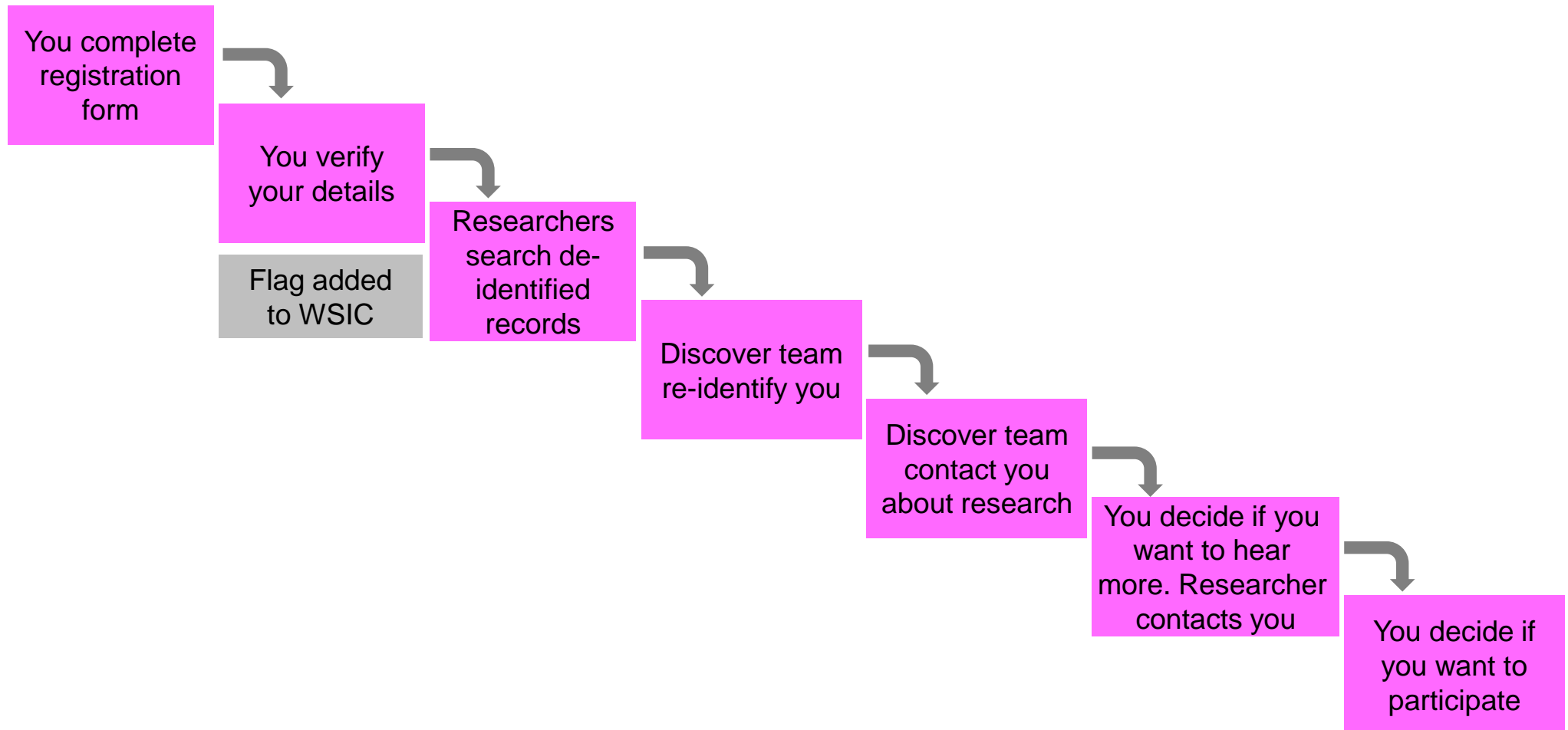
2

Recruits study participants

3

Runs research study

Joining the Discover register does not sign you up for studies, or reveal your personal details to researchers. You have to give consent *per study*



The Discover model looks to replicate that of our partner programme, SHARE in Scotland. +200k people have registered to SHARE since 2012

The screenshot displays the SHARE website interface. At the top, there are logos for SHARE, NHS Scotland, and Imperial College Health Partners. A navigation menu includes links for SHARE, STUDIES, WHY I SHARED, REGISTER, PRIVACY & SECURITY, WHAT'S NEW, QUESTIONS?, SPARE BLOOD, and GET INVOLVED. The main banner features a woman's portrait and a 'SAVE LIVES Sign up now' call to action with a 'REGISTER' button. Below this is a social sharing section with 'Like 41' and 'Tweet' buttons. A 'WATCH THE VIDEO' section shows three cartoon characters and a video player. A counter displays '212422' people registered so far. A 'ANY QUESTIONS?' section is also visible. On the right, a 'CLINICAL STUDIES' section lists several studies with their logos and brief descriptions:

- The EPIC Study**: Studying genes and lung inflammation to understand individual susceptibility to tobacco smoke.
- The INCOGNITO Trial**: Investigating COPD Lung Infections With Two Different Inhalers.
- The OuTMaC Study**: Outcomes in trials for management of Carious Lesions (Tooth Decay). School of Dentistry, University of Dundee.
- The Path-BP Study**: Paracetamol Treatment in Hypertension: Effect on Blood Pressure.
- The GoDARTS Study**: Genetics of Diabetes Audit and Research in Tayside and Scotland.

This year we want to increase sign-ups into the thousands. We are promoting via hospitals, GP practices, charities & CVSs channels

Our charity partners

A collection of logos for various charity partners. At the top center is the "DIABETES UK" logo in blue. On the left is the British Heart Foundation logo, which includes a red heart and a white ECG line above the text "British Heart Foundation". In the center is the "mind" logo, featuring a blue scribble and the text "mind for better mental health". On the right is the Bowel & Cancer Research logo, which includes a circular pattern of stylized human figures and the text "Bowel & Cancer Research". At the bottom left is the Encephalitis Society logo, featuring a brain icon and the text "ENCEPHALITIS SOCIETY The brain inflammation charity". At the bottom right is the Macular Society logo, which includes a yellow eye icon and the text "Macular Society" on a black background.



Matt Cooper

Voluntary Sector Lead for Discover

Imperial College Health Partners

Mob: 07966 614789

Follow us on Twitter: #Join_Discover

www.imperialcollegehealthpartners.com

30 Euston Square, London NW1 2FB