



City of Westminster



THE ROYAL BOROUGH OF
KENSINGTON
AND CHELSEA



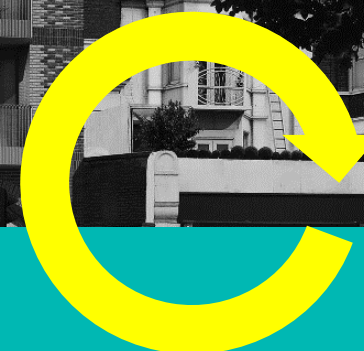
North West London
Integrated Care System



Finding healthcare solutions on your doorstep

Presentation to K&C Health & Wellbeing meeting

19th October 2021



Thankyou for the chance to meet you today !

Henry Leak

Whole Systems Hub Manager, NHS NWL CCG

Henry.Leak@nhs.net

Andrew McCall

Lay Partner, NHS Westminster ICP

Community and Patient Engagement Lead

A.McCall1@nhs.net

Our plan today :

- **Outline emerging structure for integrated delivery of healthcare in the Biborough**
- **Winter Planning : Call for collaboration with community organisations**
- **Q&A**

Context: Overview of Integrated Care System in NWL

National Definition (as per Kings Fund)

- **Neighbourhoods** (populations of around 30,000 to 50,000 people*): served by groups of GP practices working with NHS community services, social care and other providers to deliver more co-ordinated and proactive services, including through primary care networks (PCNs).
- **Places or Integrated Care Partnerships (ICPs)** (populations of around 250,000 to 500,000 people*): served by a set of health and care providers in a town or district, connecting PCNs to broader services, including those provided by local councils, community hospitals or voluntary organisations.
- **Systems or Integrated Care Systems (ICSs)** (populations of around 1 million to 3 million people*): in which the whole area's health and care partners in different sectors come together to set strategic direction and to develop economies of scale.
- Population sizes are variable – numbers vary from area to area, and may be larger or smaller than those presented here. Systems are adapting this model to suit their local contexts, for example some larger systems are operating an additional intermediate tier between place and system.

NW London Priorities for Integrated Care Partnerships (ICPs)



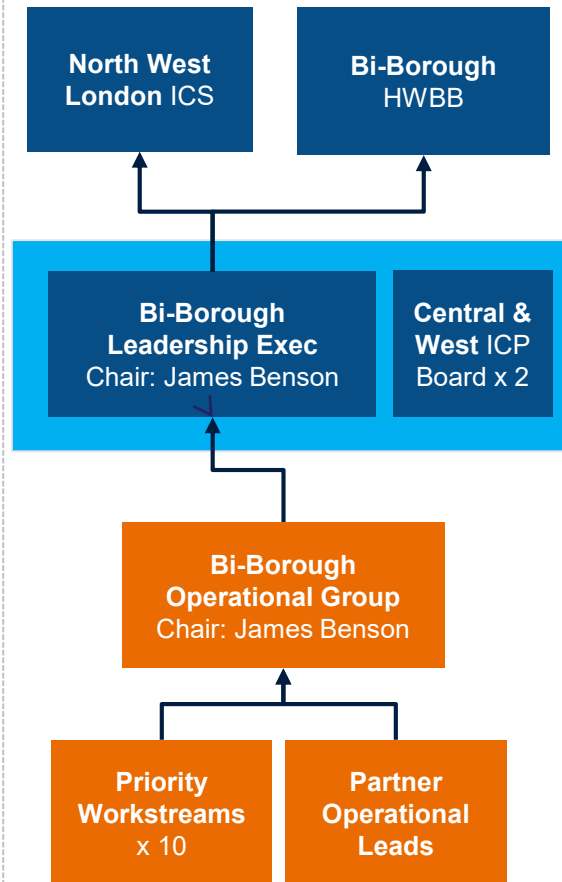
Source: <https://www.kingsfund.org.uk/publications/integrated-care-systems-explained>

In early February 2021, the youngest ICP in NW London (a star) was born!

Who are we?

- **Bi-Borough ICP** – sometimes known as KCW partnership - based on historical footprint
- Westminster and K&C **share similarities unique to NW London** – stark 'North & South' divide, 2nd home residents, 'day-time' workers and tourists and homelessness populations, thriving business and 3rd sectors
- Our partnership is focused on addressing **'system' challenges** that cannot be resolved by individual partners – e.g. Obesity, Mental Health, CYP, Homelessness, etc.
- We are moving towards **community-led approach** – developing care and support models that are tailored and owned locally and within PCNs
- **Our partnership includes:** OneWestminster, K&C Social Council, Healthwatch, CLCH, CNWL, WCC & RBKC, Central & West GP Confeds, NWL CCG – *supported by Central & West London Borough Teams*

How are we structured?

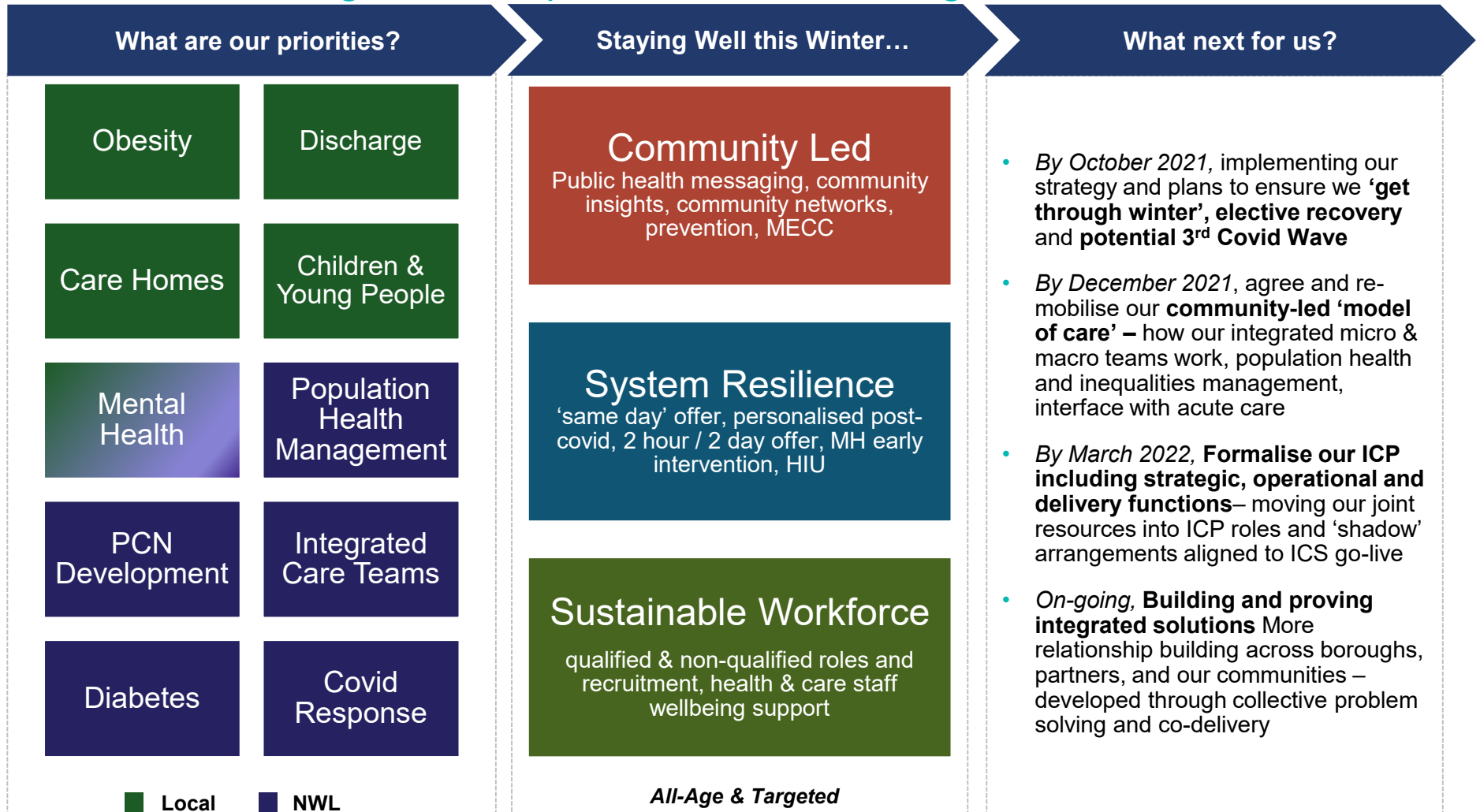


Our short journey to date...

- **'Staying Well this Winter'** – our first co-produced, communities-led and innovative system response

A communities-led, targeted and agile ICP approach can deliver real and tangible impact for individuals & families

Partnership work needs to continually deliver real & tangible benefits to allow us to manage the complexities of two boroughs and ICS stakeholders



Being the youngest means we're able learn from past experiences and best practices within NWL and nationally

Emerging integrated structure – engagement plan

Central London- ICP Board Paper | Central ICP community engagem... | Central ICP community engagem... | File | C:/Users/andre/OneDrive/Desktop/Central%20ICP%20community%20engagement%20visual.pdf

Developing our Bi-Borough engagement plan...

'As-is'

- What's worked well? Lessons Learnt
- ICS/ICP Definition & Req'ts
- Intelligence & Insight
- Community Groups & Assets

Testing

- Agreed Principles
- Priorities
- Functions: Insights, Influence, Collaboration, Qi

Plan

Bi-Borough Engagement

Co-production – through engagement and workshop activities (6-8 weeks)

City of Westminster | The North West London health and care partnership

Staying Well This Winter – *and keeping each other safe*

Our ask of you today :

- *What are your three key messages for residents this winter?*
- *Which Health/Mental Health/Wellbeing issues could you support this winter?*
 - Which communities?
 - What geography?
 - What capacity?
 - What factors define your service users?

Staying Well This Winter – *and keeping each other safe*

Our ask of you today :

Supporting High Intensity Users of healthcare services

- *Can you help us to identify and understand groups and types that are having frequent recourse to services at GP practices and A&E depts?*
- *Can you work with us to develop (and deliver?) programmes tailored to support these groups?*
- *Can you scope what resource your group would need to deliver these solutions?*
- *Can you help us to project demand and quantify outcomes?*
- *What personnel and resources could you apply?*
- *What further resources would you want us to provide?*

***Thankyou for your support and we look forward
to working with you***

Q & A

✓

Henry Leak
Whole Systems Hub Manager, NHS NWL CCG
Henry.Leak@nhs.net

Andrew McCall
Lay Partner, NHS Westminster ICP
Community and Patient Engagement Lead
A.McCall1@nhs.net