

Bi-Borough Place Based Partnership (PBP) Mental Health Priorities

K&C VCS Health and Wellbeing Forum
Date: 26th April 2022

Mental Health Work streams

Mental health is one of the Bi-Borough Place Based Partnership (PBP) five priority areas, there are four main areas of focus :

Integrated
Older Adult
Mental
Health Care

16-25 Young
Adults Mental
Health

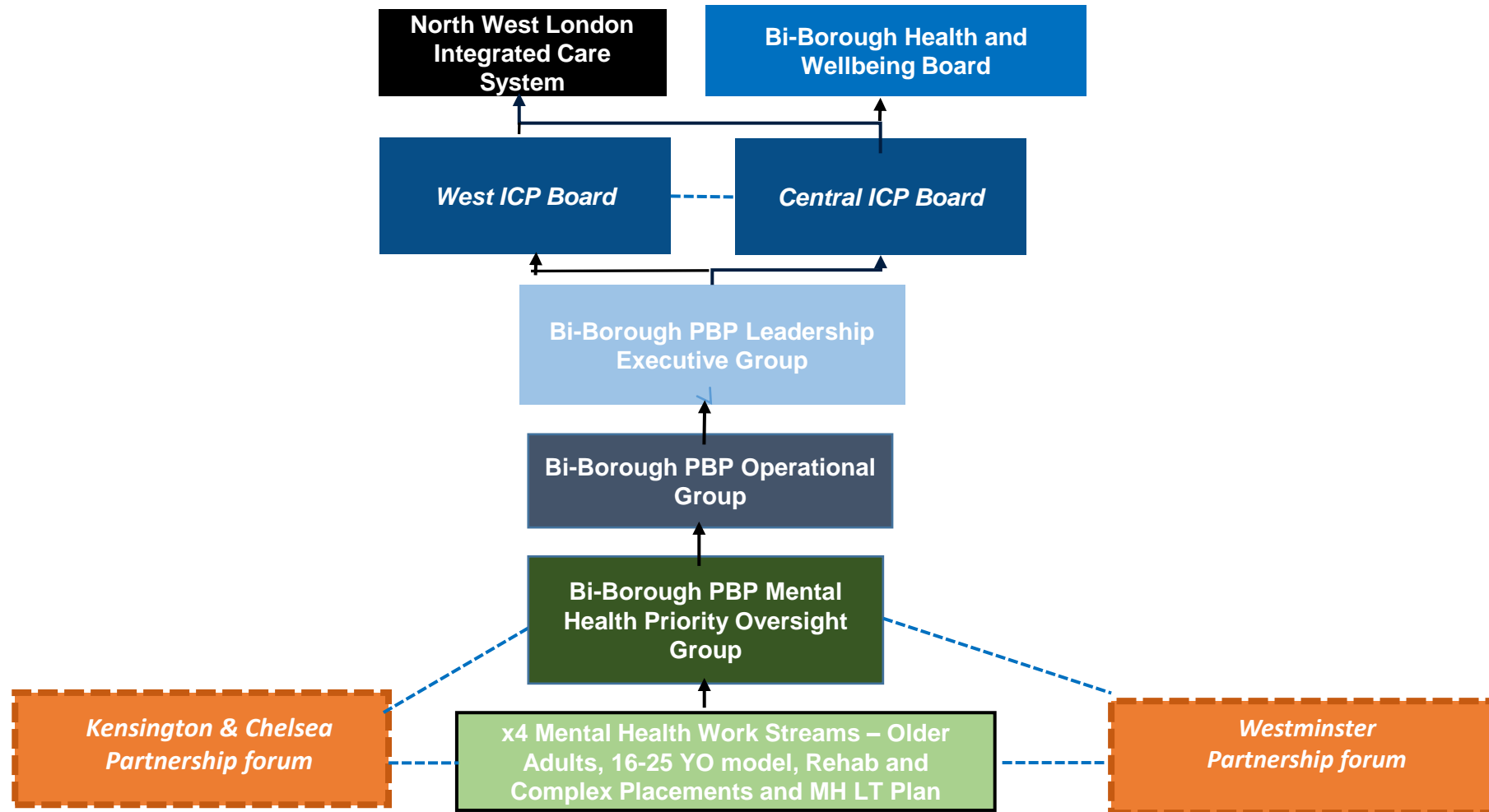
Rehabilitation
and Complex
Mental Health
Placements

Long Term Plan
Mental Health

1. **Integrated Older Adult Mental Health Care** – development and delivery of an integrated physical and mental health care offer for older adults in the bi-borough.
2. **Young Adults Mental Health** – development and implementation of a new offer for 16-25s with mental health needs across the bi-borough, in line with North West London-wide co-produced model of care and interfacing with new community mental health hub model for adults.
3. **Rehabilitation and Complex Mental Health Placements** – to establish a single work stream to implement priorities across placements, rehab and new revised forensic pathway.
4. **Overall NHS Long Term Plan for Mental Health Delivery** – ensuring the delivery of the mandated requirements, ambitions and Key Performance Indicators (KPIs) from the Long Term Plan. i.e. new model of integrated primary and secondary care KCW Mental Health Hubs.

KCW Mental Health Partnership Forums - work underway to develop/evolve collaborative **partnership forums** within the PBP framework. with a focus on; engagement, co-production , networking and information sharing to address issues experienced within the local health and social care system.

Bi Borough PBP Programme Governance



Work stream priorities

Work stream	Aims	Summary of work
Older Adult (OA) Mental Health	To identify, co-design and test new models of joined up care between mental health and physical health that will support delivery of a more integrated Older Adult pathway model across the bi-borough	<ul style="list-style-type: none"> • Monthly OA delivery group meetings • Data exercise ongoing to define the cohort • Pathway mapping and prioritisation exercise • Service User and Carer engagement in partnership with Age UK K&C • Integrated model development and key components such as MDT forums at a local level re: 'rising risk/delirium cohort' and launch of OA Interface roles pilot • Develop Care Home In reach offer for those with dementia and behaviours that challenge • Dementia Task & Finish Group – improving dementia diagnosis, align with new NWL memory assessment specification and review post diagnostic support services. • Launch Care Navigation task & finish group
Young Adults 16-25 Year Old ICP model application and implementation	A KCW Young Adult Implementation group set up to tailor and deliver the NWL 16-25s mental health and wellbeing partnership model locally	<ul style="list-style-type: none"> • Monthly Local Implementation meetings launched Nov 2021 • Young Adult Recruitment: Clinical - Consultant Psychiatrist, Pathway leads, Community Navigator roles (SMART/MIND), University/College Link Mental Health practitioner • Community Grant Scheme launched in partnership with K&C Youth Foundation to support a range of KCW VCS mental health and wellbeing projects • Young Adult Ambassador Group (15 young adults) meets every 3 weeks to oversee implementation and guide developments. • Develop and Implement a new triage and partnership fortnightly forum bringing together CAMHS, adult mental health services and wider young adult's services to support young adults • Bridging the Gap - Partnership approach agreed in Westminster to support the new open-access young adult mental health hub • Workforce development - Adolescent Mentalization-Based Integrative Treatment (AMBIT) training is well evidenced for developing a team approach to working with young adults and working across agencies
Rehab & Complex Placements	A single work stream to implement local priorities across placements, rehab and new revised forensic pathway to support closer to home	<ul style="list-style-type: none"> • Launched first Implementation group meeting April 2022, recruiting VCS rep • High level pathway mapping exercise; gaps and opportunities • Agree priority areas of work and timelines for delivery
Mental Health Long Term plan	Implementation of the national Mental Health Long Term Plan requirements	<p>Review of progress in each area to ensure 2022/23 requirements are met</p> <ul style="list-style-type: none"> • Expansion of IAPT • New model of Community Mental Services i.e. KCW Hubs • Expansion of Individual Placement Support (IPS)

Group discussion

How do we ensure VCS are represented and have a voice in the Mental Health transformation priorities?

- **KCW Local Partnership forums**
- **Task and finish/ working groups**
 - What are your thoughts on an approach to seeking involvement from VCS ?
 - How do we keep people updated who cant always commit/attend these groups?

Comments, suggestions and/or questions

